



Those Who Run in the Sky (Angakkussaq)  
Presented by The National Theatre of Greenland (Nunatta  
Isiginnaartitsisarfia  
Relaxed Guide - May 2022

© Harbourfront centre

# Table of Contents

I am going to a play	3
Map	18
Introduction	19
How to Relax your viewing experience	20
Meet the Actors	21
What is the play about?	22
Quick Tips for Planners	24
Fact Sheet	25
Access Points for the show	32
Credits	34

---





I am going to see a play!

I am going to see a play at the Junior Festival at Harbourfront Centre.



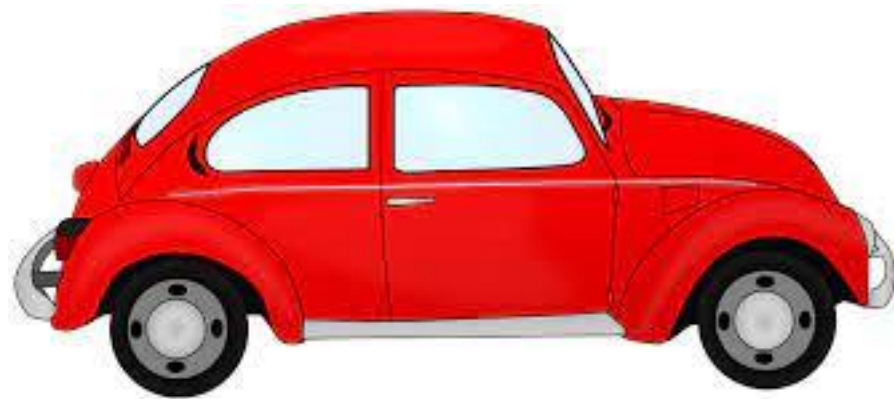


The play I am going to see is called Those Who Run in the Sky.

It is also called Angakkussaq. That is the title in Kalaallisut - a language spoke in Greenland.

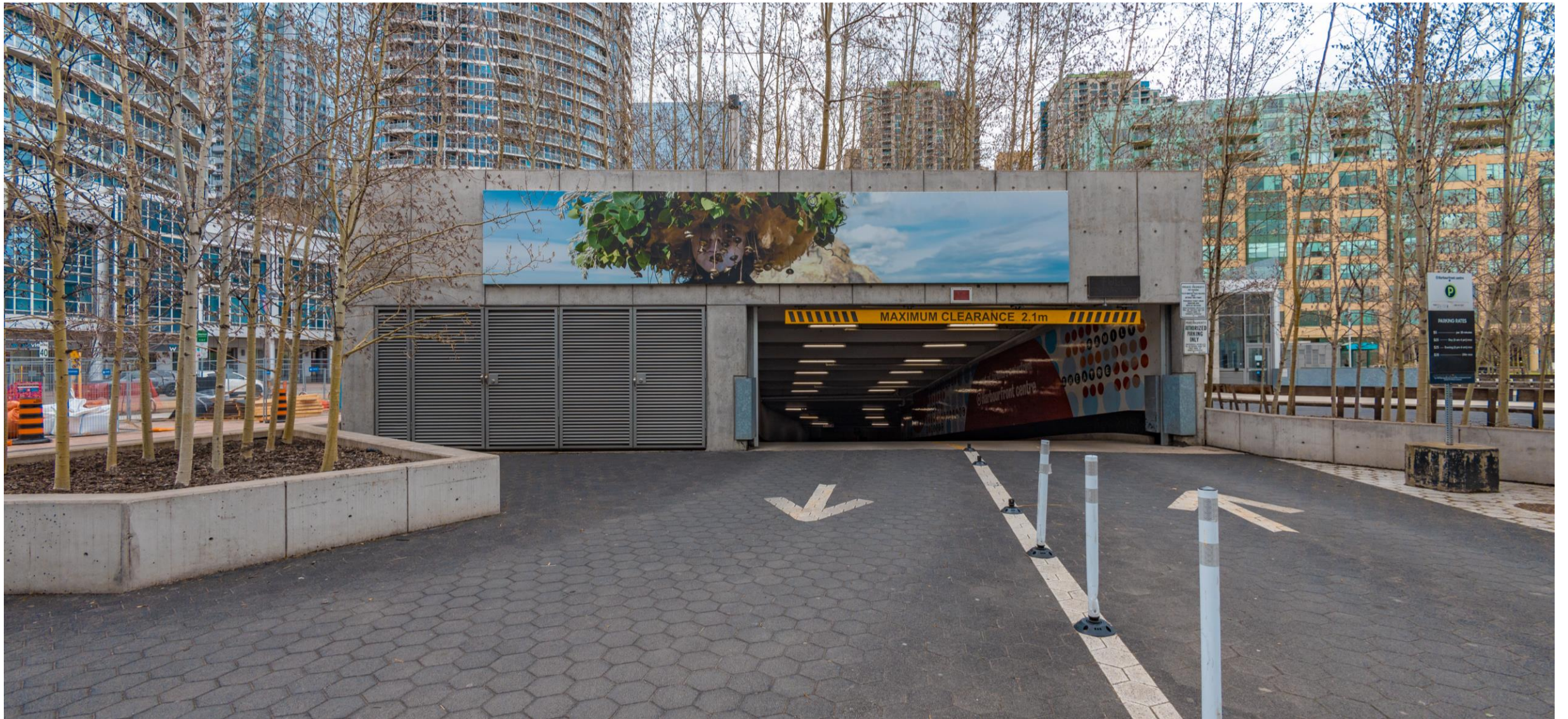
The play is from Greenland.





I can get to Harbourfront Centre by car, streetcar or by using other forms of transportation





If my family drives, we can park at the underground parking lot by Harbourfront Centre. It costs \$25 to park here.

There are lots of other parking lots around the area.

We can choose where we park.





If we take the streetcar we will get off at the Harbourfront Centre stop.

This stop is right in front of Harbourfront Centre.





Once we have arrived at the theatre we can go inside and wait in the lobby if we like. We can also go inside to use the washrooms.

There are two accessible washrooms on the first floor of the building.





I can ask any of the ushers or volunteers to tell me where the washrooms, water fountains, chill out space and the seats are. I can also go to the Info Desk for help.

All ushers and volunteers at the performance are there to help me and everyone else who has come to the Junior Festival.





Many plays and performances are happening all over Harbourfront Centre during the Junior Festival. If it is loud or overwhelming I can use the Chill Out space.

The Chill Out Space is in the Marilyn Brewer Community Space.





The play will happen in the Studio Theatre.

The seats in the Studio Theatre do not move. They are in long rows with an aisle on either side





I will enter the theatre at the back. The rows of seats are higher at the back than the front. There are steps that go down to the front rows.

If I am, or a member of my family is, a mobility device user, I will enter from the left side of the theatre. This will lead me to the mobility device seating area. There is lots of room here. I can sit with my entire family/group.





I will not go on the stage before, after or during the play.

The lighting changes and action can make it dangerous for me and the actors if I do.





During the show I can clap, laugh, smile, and feel any way that the show helps me to feel.





I can do what I need to enjoy it more - I can doodle, fidget, stim, dance, move, vocalize, sit, lay, talk, and more! I can be me!





If the show is too loud I can cover my ears with my hands, or wear sound dampening headphones - whichever feels best for me.

I can also choose to take a break in the Chill Out space.

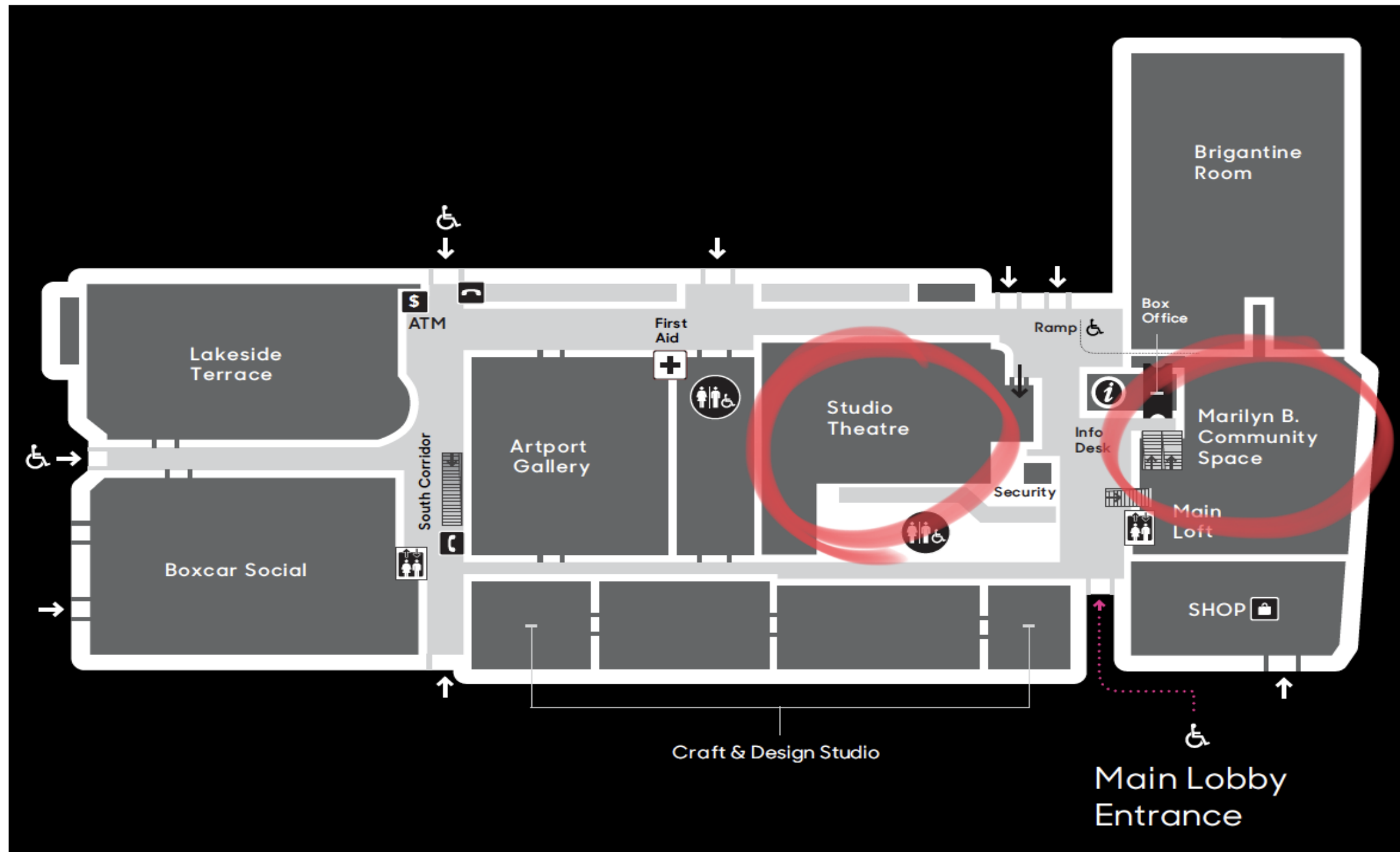




At the end of the play I can show the actors how much I liked it by clapping, saying “Bravo” and by using any other way that feels good for me.



# Map of Harbourfront Centre







## Introduction

Today you will be watching a play. It is not a movie. It is performed by actors right in front of you!

It has actors and costumes and a screen on the stage.

If it is a play, why is there a screen? During the play images and colours will be projected onto the screen to help show where or when the characters are. Sometimes the projections set a mood. This helps us know how to feel during the play.



# How to RELAX Your Viewing Experience

Below are some things you can do to enjoy the play more:

- wear comfy clothes
- grab your favourite pillow, blanket or stuffy, and bring them with you!
- sit on a chair, wiggle in your seat, walk around, dance - do whatever feels right while watching
- vocalize - feel free to make sounds during the play - clap, laugh, sigh - whatever you need to do to share how you feel
- take breaks if needed - there is a Chill Out space right next door in the Marilyn Brewer Community Space
- doodle, fidget, stim, sing - just be you!



# Meet the Actors

There are four actors in the play. Below are photos of the actors.



This is Dina Fisker Sandgreen



This is Josef Tarrak-Petrussen



This is Milla Marie Petersen.



This is Salik G. Lennert.

.





## What is the play about?

Those Who Run in the Sky is a movement-based adaptation of the bestselling novel by Inuk author Aviaq Johnston. Step into an imaginative coming-of-age story that follows a young shaman named Pitu as he learns to use his powers when finding himself lost in the world of the spirits (and ultimately returns home).

After a strange and intense blizzard leaves Pitu stranded on the sea ice, without his dog team or any weapons to defend himself, he soon realizes that he is no longer in the world that he once knew. The storm has carried him into the world of the spirits, a world populated with creatures, both terrifying and incredible, symbolized on stage through the magic of projections and our imaginations. Towards the end of his journey, Pitu meets a lone giant who can carry Pitu in the palm of her hand and keeps caribou and polar bears as pets. After stumbling upon a fellow shaman who has been trapped in the spirit world for many years, Pitu must master all of his shamanic powers to make his way back to the world of the living, to his family, and to the girl that he loves.

The National Theatre of Greenland is proud to be the first theatre to put this story on stage and thereby also honour the close ties that exist between Inuit in Canada and Greenland. The performance was created in close collaboration with Canadian and Greenlandic artists.



# Quick Tips for Planners

Read below for info that those who plan the trip might need to know

Those Who Run in the Sky Relaxed Performance at Harbourfront Centre in the Studio Theatre

**Address:** 235 Queens Quay West

**Date:** Monday May 23, 2022

**Start Time:** 11:30am      **End Time:** 12:25pm

**Seating:** Traditional theatre style seating. There are aisles on either side of the rows. Rows are higher at the back and lower at the front.

**Ramp:** There is a ramp at the entrance to the building and one into the side of the Studio Theatre. If you need to use the ramp into the theatre please ask for assistance.

**Streetcar stop:** Harbourfront Centre

**Parking:** There is parking onsite in an underground garage. Parking here is \$5/half hour or \$25 for the day. There are many other lots within walking distance. All cost about \$25.

**Food & beverage:** Food and drink are allowed in the theatre.

For more detailed access info please go to: <https://harbourfrontcentre.com/wp-content/uploads/2022/04/Harbourfront-Access-Guide-2022.pdf>

# Those Who Run in the Sky Fact Sheet

## Read here to find out more about the play

The play you are going to watch is called Those Who Run in the Sky.

It is presented by The National Theatre of Greenland (Numata Isiginnaartitsisarfia).

The play is in Kalaallisut - a language spoke in Greenland. This is because the play is from Greenland. The play will not be translated into English.

The play is an adaptation of a book. That means that the script for this play was written based on a book. The book was changed a bit to make it easier to act out on stage and more exciting to watch.

There will be an introduction to the play in English.

The play lasts approximately 55 minutes.

The lights in the theatre will stay on at a low level during the play.

Any sound effects or music will be played at a lower level for this performance.

When it is time for you to watch the play you can sit in a seat, stand up, make sounds - whatever makes the play most enjoyable for you.

There are four actors in the play.

Three of the actors play many roles - human, animal and spirit.



Sometimes the play is loud, other times it is quiet - the volume depends on the emotions that the characters are feeling and the situations they are in.

During the play voices are often used to help show the emotion being felt. Usually they quietly underscore the action of the scene. Sometimes it can take a moment to realize any sound is being produced.

There will be projections onto the screen at the back of the stage. Sometimes the projections will be colours, other times shapes or images. The projections tell us where or when the characters are. They can also help us to know how to feel during some scenes.

Parts of this play can be scary. Please know that everyone on stage and in the audience is safe. The scary part will pass and we will all be ok.

There is one part of the play where white lights flash across the stage and the screen. These notes will let you know when that happens so that you can cover your eyes or look away if you need to.

The play will begin when the lights on stage go dark, the projections begin and the actors come out onto stage.

At the beginning of the play, Pitu is hunting. There are wind sounds. These are made by the other actors.

As he hunts the other actors will begin to slap the ground, as if playing drums, and making sounds with their voices. This can seem loud. If it is too loud you can cover your ears or wear sound dampening headphones.

After Pitu has caught his prey, he mimes cleaning out the animal/fish. There are no real animals on stage. No animals or fish were harmed.

The actors pretend to shout. This may seem loud. If it is too loud you can cover your ears or wear sound dampening headphones.

All of the actors sing together. This may seem loud. If it is too loud you can cover your ears or wear sound dampening headphones.

Three of the actors pretend to be Pitu's dog sled team.

When Pitu sees the girl he loves, his voice sounds deeper when he speaks. She laughs and his voice goes back to normal.

The girl tries to kiss Pitu and he runs away.

Someone is humming quietly throughout the scene.

It is nighttime. Everyone lies down and goes to sleep. During this scene the lights change and a loud sound is played. The projections change faster than they had before, but still not too quickly.

Someone follows Pitu. When he sees them, they squeal and jump into his arms.

When the orange coloured projection comes on, speaking happens. The voices sound deep and loud. If it is too loud you can cover your ears or wear sound dampening headphones.

One of the characters pushes Pitu. The lighting changes. Get ready the flashing lights start soon.



Sounds are played. Is it thunder or the footsteps of a very large person? Can you tell?

This is where the flashing lights begin (approx. 27:30 minutes into the play). If you need to cover your eyes, now is a good time to do so.

The sounds gets more rhythmic and frequent and begins to sound more like drumming. There are also wind noises.

The lights flash more frequently, but the main spotlight gets brighter, so the flashing isn't as noticeable.

The scene only lasts about 90 seconds in total. You will know it is over when only Pitu is left on stage and the spotlight gets very small around him.

Music is played. There is singing. This may seem loud. If it is too loud you can cover your ears or wear sound dampening headphones.

The music turns into the sound of a heartbeat. As it does this the lights on stage go red.

When the stage and screen turn red, hands can be seen at the top of the screen. It looks like they are trying to reach down to Pitu.

Shadowy, large beings appear on the screen.

Screeching and a high-pitched sound can be heard. This may seem loud. If it is too loud you can cover your ears or wear sound dampening headphones.

The other actors appear at the side of the stage. They use bright white lights to make themselves look like one large being/creature.

When the being/creature gets close to Pitu it screams loudly. This may seem loud. If it is too loud you can cover your ears or wear sound dampening headphones.

The being/creature rushes toward Pitu, speaks to him in a deep voice and then leaves.

The lights get brighter and the sound of wolves howling comes from all around the stage. The other actors are making the wolf sounds.

The wolves move in on Pitu. They pace around him threateningly.

Drumming sounds are played. This may seem loud. If it is too loud you can cover your ears or wear sound dampening headphones.

Pitu fights the wolves.

Everything goes into slow motion!

The lights get darker and the wolves overpower Pitu.

He breaks free, but soon the wolves overpower him again.

Pitu is saved by a giant. The giant throws the wolves off of Pitu and then carries him away.

The giant takes Pitu to a shaman to be healed after the wolf attack.



The shaman works to make Pitu healthy again. They speak very loudly. If it is too loud you can cover your ears or wear sound dampening headphones.

Part of the healing process involves the shaman regurgitating something out of their throat and mouth to rub all over Pitu. This is all mimed by the actor. They are not really spitting on or rubbing spit on/all over anyone.

There is a very light fog effect used on stage. It will not get heavy or come into the audience.

The actors begin to sing. This sounds more like traditional throat singing than the pop, rock or hip hop music you might be used to. There are also animal-like sounds happening at the same time.

Pitu is healed!

A howl is heard and the lights on stage turn blue.

Music is played.

The actors begin to move around the stage. It looks like they are swimming or dancing.

The wind, gentle at first, begins to get stronger and louder.

The lights on the stage and the screen go red again.

Screeches are heard. This may seem loud. If it is too loud you can cover your ears or wear sound dampening headphones.

Pitu and the shaman are being chased. They run quickly.

The shaman gets pulled back, away from Pitu.

Pitu tries to save the shaman.

All of the lights on stage go out. It is dark. This will only last a moment. The lights will come back on.

Blue lights come up on stage after the moment of darkness.

Pitu lies on the ground.

As Pitu gets up, brighter lights come up on stage.

Pitu shouts. This may seem loud. If it is too loud you can cover your ears or wear sound dampening headphones.

Pitu is home. His family is happy to see him.

They sing and dance happily. This may seem loud. If it is too loud you can cover your ears or wear sound dampening headphones.

After Pitu sees the girl he loves, whispering sounds can be heard softly.

The stage goes a darker blue.

Pitu fishes using a spear. When he throws the spear into the water, he stomps loudly on the stage and the lights go out.

One of the actors shouts loudly in the darkness. All the other actors join in. This is the end of the play.



# Access Points for the Show

The Junior Festival is proud to expand access points for Those Who Run in the Sky

Below are some of the things we are able to offer

Chill Out space - the Chill Out space will be located in the Marilyn Brewer Community Space - right across the lobby from the Studio Theatre.

Expanded seating areas for Mobility Device users and their families/group. There are two accessible washrooms on the main floor of the building.

Relaxed Guide - a Relaxed Guide has been created to help with the process of attending the show. The guide provides a story to help with attending the theatre, information on the show, photos of the actors, quick tips for planners (things for parents and caregivers to know), a map of Harbourfront Centre and more!

During the show - house lights will be left on at a low level, sound cues will be played slightly lower, audience members can move within the space and can leave and re-enter at any time, being authentically yourselves is encouraged so please feel free to fidget, stim, laugh, cry, whatever feels best for you and your group!



Thank you for watching  
Those Who Run in the Sky.

We hope you enjoyed the  
play!



# Credits

Those Who Run in the Sky is presented by Numata Isiginnaartitsisarfia ( The National Theatre of Greenland)

Numata Isiginnaartitsisarfia was established in 2011 and is an independent public institution and aims to produce a repertoire of high artistic quality performances rooted in the Greenlandic culture and traditions. The Theatre produces 3-5 performances every year and presents a diversity of artistic expressions for all age groups.

## **Cast:**

Dina Fisker Sandgreen  
Milla Marie Petersen

Josef Tarrak-Petrussen  
Salik G. Lennert

## **Creative Team:**

Author (original book)  
Adaptation & Director  
Dramaturg  
Movement Director  
Directing Assistant

Aviaq Johnston  
Patti Shaughnessy  
Susanne Andreasen  
Bill Coleman  
Najattaajaraq Joelsen

## **Accessibility:**

Relaxed Guide & Consultation

Rachel Marks

## **Photo Credits:**

Harbourfront Centre facility images: Brian Medina

Production shots: Gerth Lyberth

Headshots: Gerth Lyberth (Josef, Milla & Salik) and Leiff Josefsen (Dina)