



# Spoiiiiiiiiing!

Presented by Kitt Johnson X-act

Relaxed Guide - May 2022

© **Harbourfront centre**

# Table of Contents

<u>I am going to see a play at the Junior Festival at Harbourfront Centre.</u> .....	1
<u>Map of Harbourfront Centre</u> .....	16
<u>Introduction</u> .....	17
<u>How to RELAX Your Viewing Experience</u> .....	18
<u>Meet the Actors and the Characters</u> .....	19
<u>What is the play about?</u> .....	20
<u>Quick Tips for Planners</u> .....	21
<u>Spoiiiiiiiiing Fact Sheet</u> .....	22
<u>Access Points for the Show</u> .....	26
<u>Credits</u> .....	28



I am going to see a play at the Junior Festival at Harbourfront Centre.



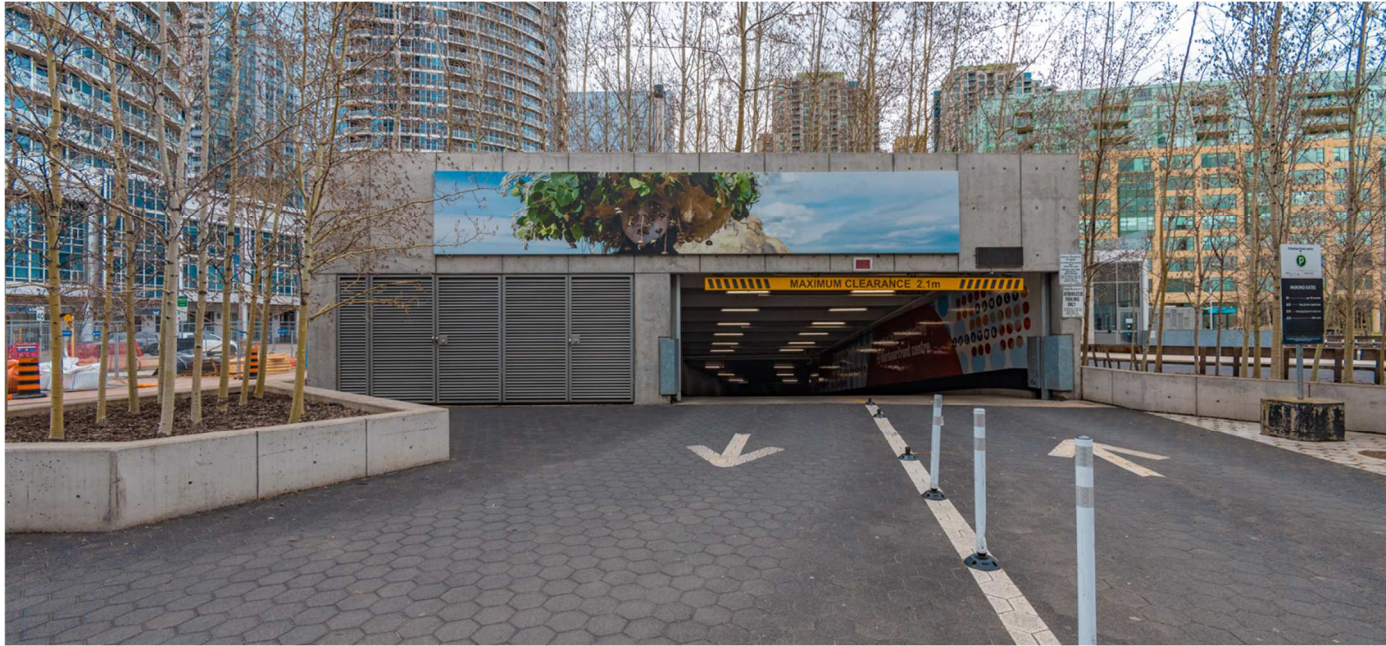
The play I am going to see is called Spoiiiiiiiiing!

It is from Denmark.



I can get to Harbourfront Centre by car, streetcar or by using other forms of transportation.





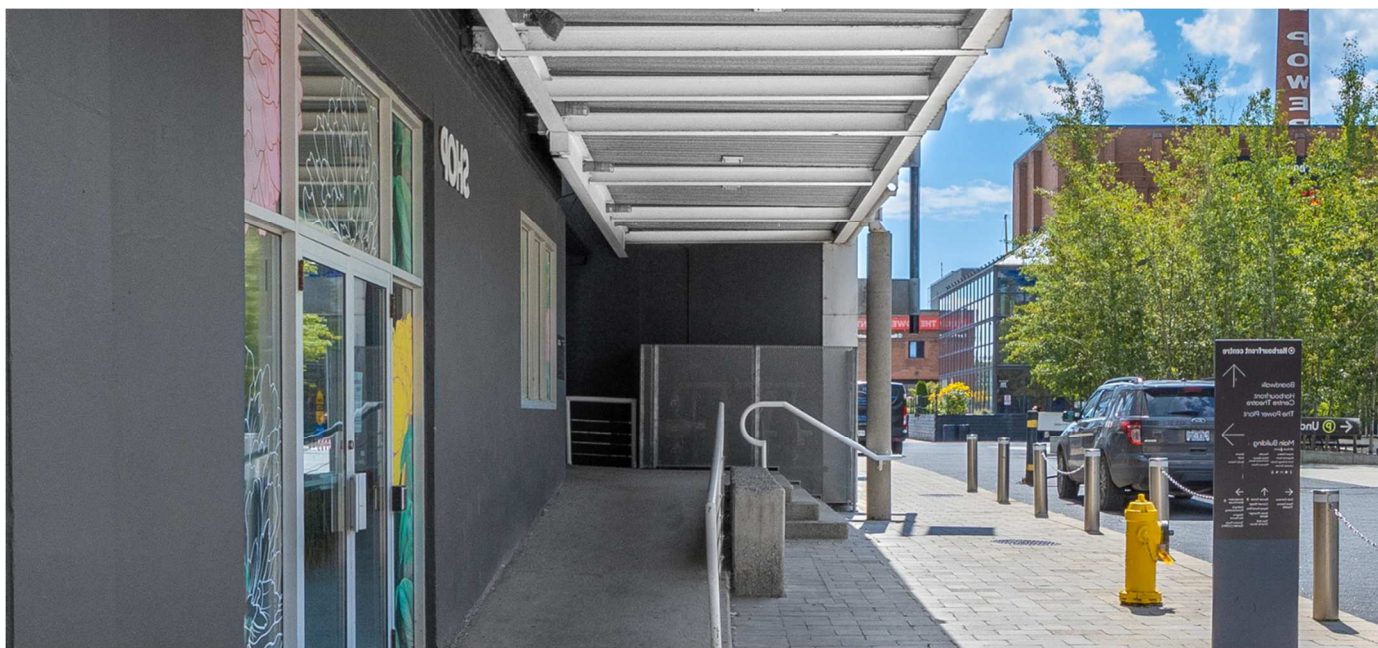
If my family drives, we can park at the underground parking lot by Harbourfront Centre. It costs \$25 to park here.

There are lots of other parking lots around the area.

We can choose where we park.



If we take the streetcar we will get off at the Harbourfront Centre stop.  
This stop is right in front of Harbourfront Centre.



Once we have arrived at the theatre we can go inside and wait in the lobby if we like. We can also go inside to use the washrooms.

There are two accessible washrooms on the first floor of the building.





I can ask any of the ushers or volunteers to tell me where the washrooms, water fountains, chill out space and the seats are. I can also go to the Info Desk for help.

All ushers and volunteers at the performance are there to help me and everyone else who has come to the Junior Festival.

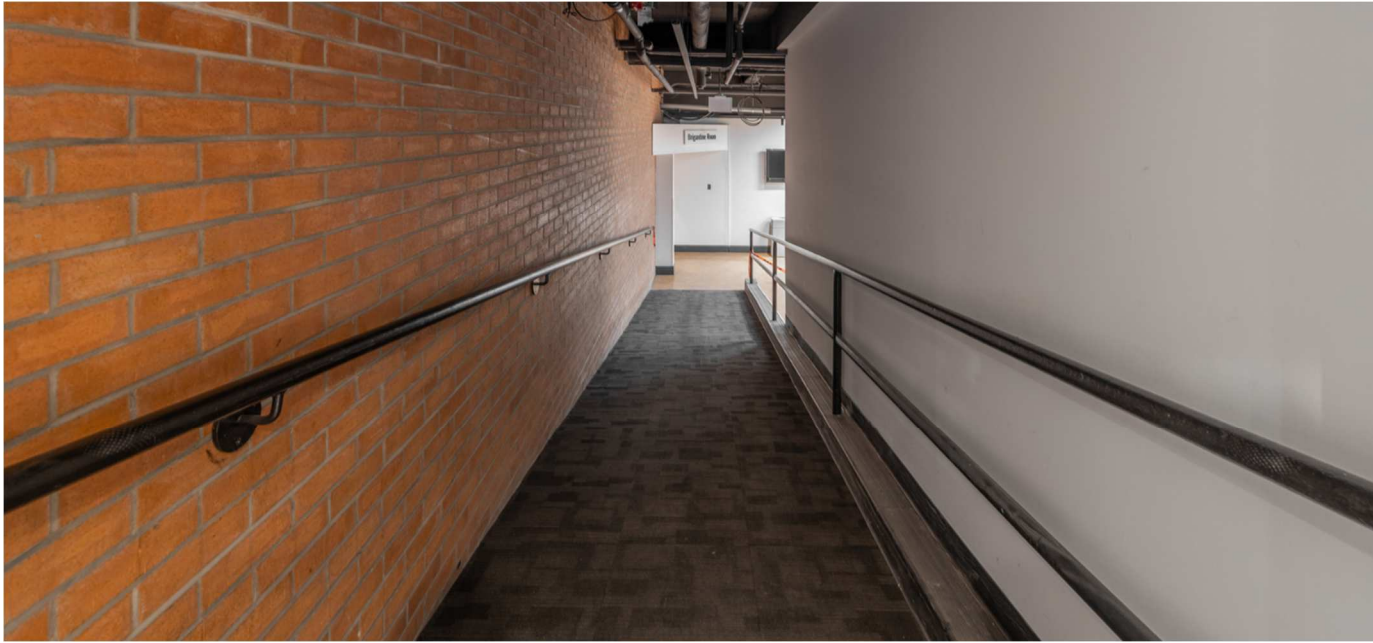


Many plays and performances are happening all over Harbourfront Centre during the Junior Festival. If it is loud or overwhelming I can use the Chill Out space.

The Chill Out Space is in the Marilyn Brewer Community Space.

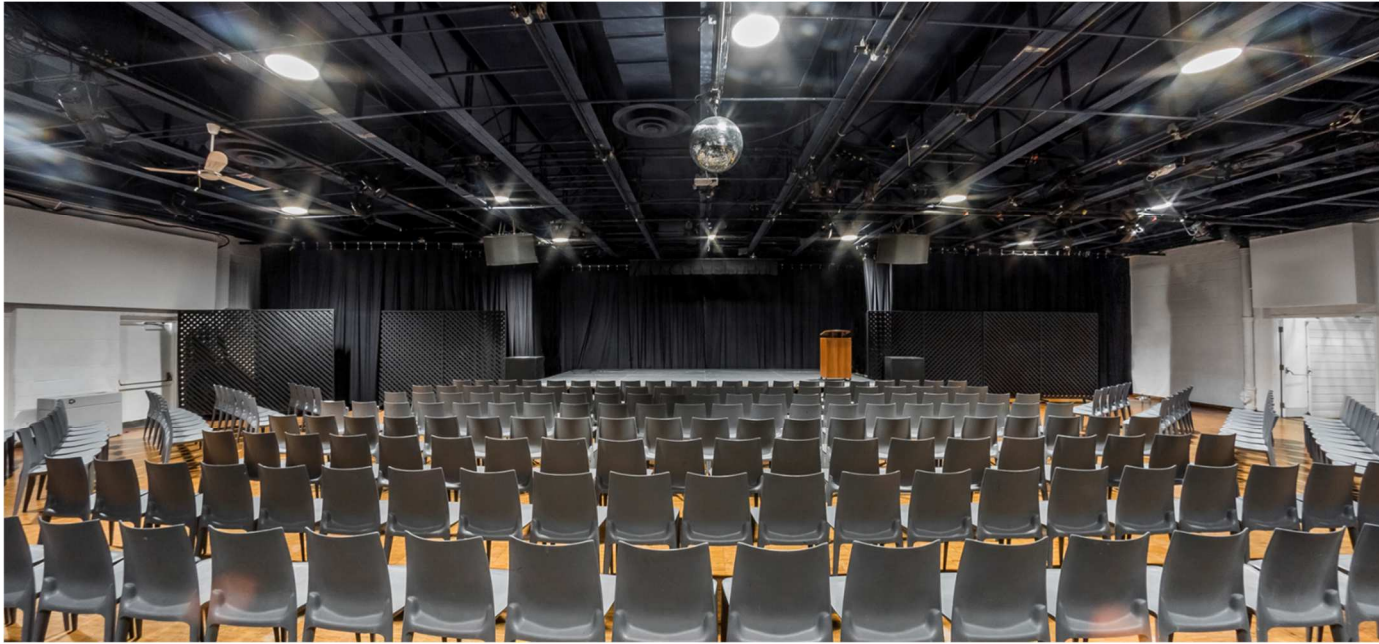


The play will happen in the Brigantine Room.



There is a ramp down to the Brigantine Room if I, or a member of my family/group, need it. The seats in the room all move, so my mobility device can fit anywhere and I can sit with my entire family/group.





When we enter the theatre I can sit in my seat, or I can choose to sit on the mats at the front of the stage area.

I will not go on the stage area unless invited by the cast. The lighting changes and action can make it dangerous for me if I do.



During the show I can clap, laugh, smile, and feel any way that the show helps me to feel.



I can do what I need to enjoy it more - I can doodle, fidget, stim, dance, move, vocalize, sit, lay, talk, and more! I can be me!



If the show is too loud I can cover my ears with my hands, or wear sound dampening headphones - whichever feels best for me.

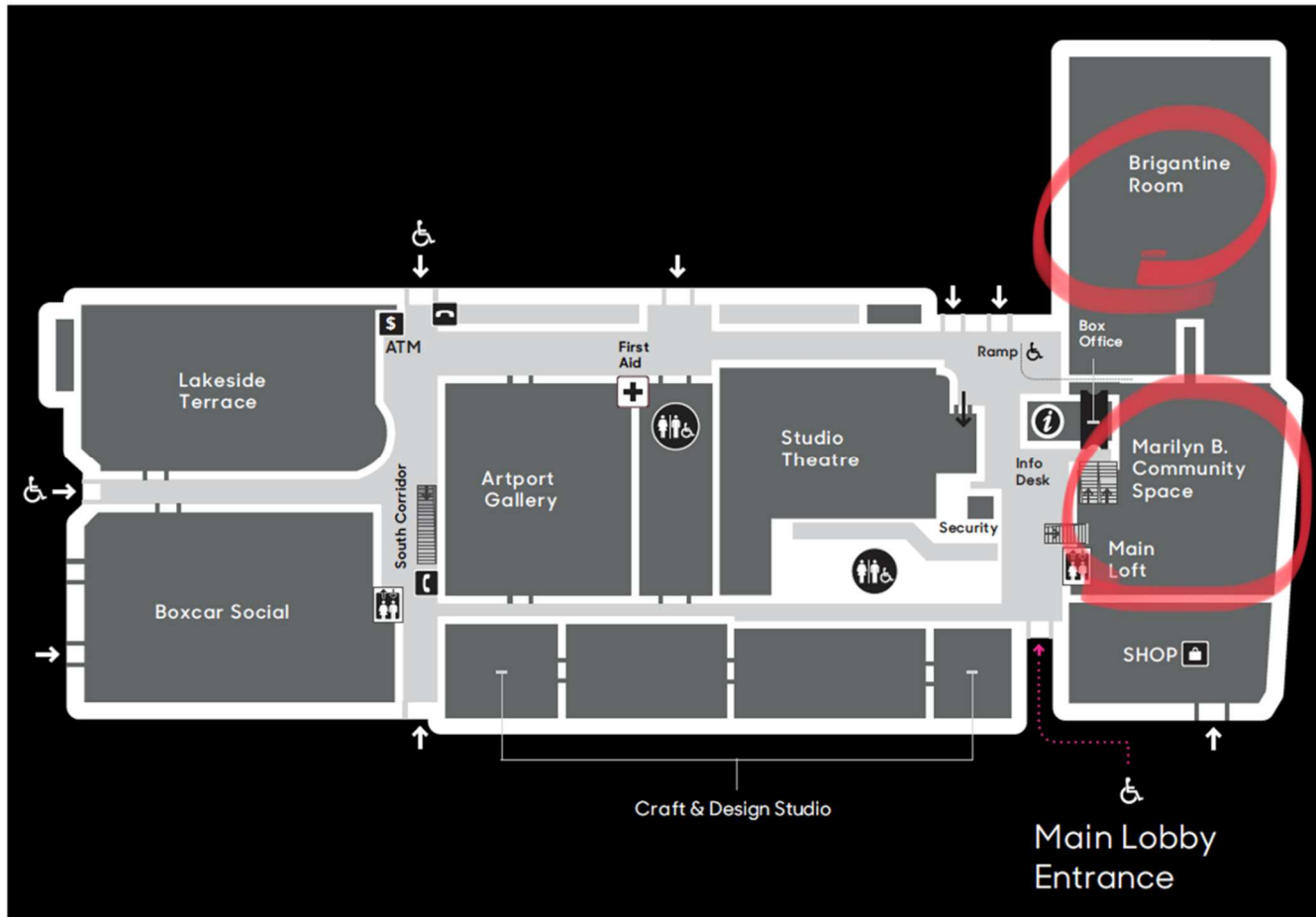
I can also choose to take a break in the Chill Out space.





At the end of the play I can show the actors how much I liked it by clapping, saying “Bravo” and by using any other way that feels good for me.

## Map of Harbourfront Centre





## Introduction

Today you will be watching a play. It is not a movie. It is performed by actors right in front of you!

It has actors and props and a set.

What is a set? A set is the background behind the actors. It is also the furniture that the actors sit or stand on throughout the play. Sets help us to know where and when the play takes place. In this play the same set is used for every scene, but things are used in different ways to represent different places or things.

What are props? Props are anything that the actors hold that helps let us know where they are, about their personalities and location. Props help the actors to tell us the story of the play.

# How to RELAX Your Viewing Experience

Below are some things you can do to enjoy the play more:

- wear comfy clothes
- grab your favourite pillow, blanket or stuffy, and bring them with you!
- sit on a chair, sit on the mats, wiggle in your seat, walk around, dance to the music - do whatever feels right while watching
- vocalize - feel free to make sounds during the play - clap, laugh, sigh - whatever you need to do to share how you feel
- take breaks if needed - there is a Chill Out space right next door in the Marilyn Brewer Community Space
- doodle, fidget, stim, sing - just be you!



# Meet the Actors and the Characters

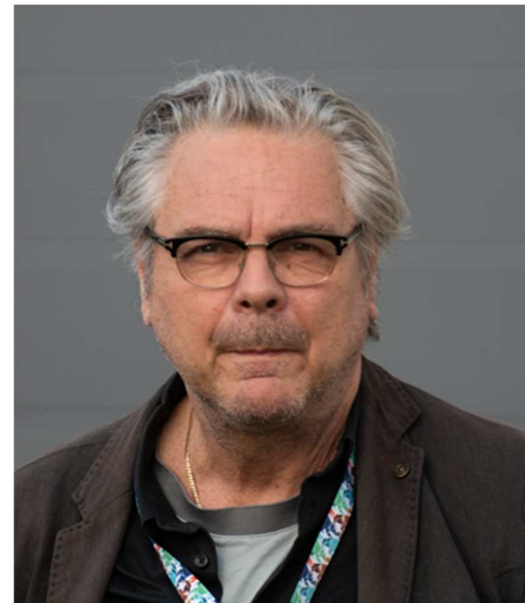
Spoiiiiiiiiing! has two actors.

Below are photos of the actors with some information on the characters they play.



This is Samuel Gustavsson (he/him).

Samuel performs magic tricks  
during the show.



This is Sture Ericson (he/him).

Ericson plays music during the show.



## What is the play about?

Join us on an expedition as Kitt Johnson X-act presents a magical performance for children and their adults, Spoiiiiiiiiing. One man's trash is another man's treasure. Step into a world full of trash, music and magic, and meet the two unusual trash-sorting experts. One with an ear for the secret music of the trash and the other with an eye for its hidden treasures.

# Quick Tips for Planners

Read below for info that those who plan the trip might need to know

Spoiiiiiiiiing Relaxed Performance at Harbourfront Centre in the Brigantine Room

Address: 235 Queens Quay West

Date: Monday May 23, 2022

Start Time: 11am                      End Time: 11:45am

Seating: There are mats on the floor and moveable chairs. All chairs can be moved to make space for mobility devices. The room is all one level.

Ramp: There is a ramp at the entrance to the building and one into the Brigantine Room.

Streetcar stop: Harbourfront Centre

Parking: There is parking onsite in an underground garage. Parking here is \$5/half hour or \$25 for the day. There are many other lots within walking distance. All cost about \$25.

Food & beverage: Food and drink are allowed in the theatre.

For more detailed access info please go to: <https://harbourfrontcentre.com/wp-content/uploads/2022/04/Harbourfront-Access-Guide-2022.pdf>

# Spoiiliiiiiiing Fact Sheet

Read here to find out more about the play

The play you are going to watch is called Spoiliiiiiiing! It is presented by Kitt Johnson X-act.

Can you tell how many letter “i” are in the word Spoiliiiiiiing? There are 9!!

The play lasts approximately 45 minutes.

The play will begin outside of the theatre and the actors will invite you to join them when it is time.

When it is time for you to watch the play you can sit on the mats on the floor, sit in a chair, lie down with a pillow and blanket, stand up, make sounds - whatever makes the play most enjoyable for you.

All of the chairs are moveable, so if you (or someone you are with) uses a mobility device, chairs can be moved to make extra space.

There are two actors in the play - Samuel and Ericson.

Samuel is an actor and performs magic.

Ericson is an actor and a musician.

Sometimes the play is loud, other times it is quiet - the volume depends on the emotions that the characters are feeling.



Music is often played during the play to help show the emotion being felt. This can sometimes seem loud. If it is too loud you can cover your ears or wear sound dampening headphones.

There are very few lighting changes in the play.

In the play the actors are carrying big, black garbage bags that are very full. These bags are filled with props that act as garbage and recycling. It is real recycling that has been cleaned - it will not smell and the items are not dirty.

The actors are looking for Axel.

Axel has escaped.

Samuel will ask you to follow him. This is when you will enter the theatre.

When everyone is in the theatre, the actors will begin sorting the garbage and recycling.

Sometimes the actors may ask the audience about the recycling. It is ok to answer them out loud.

Ericson will use different pieces of the recycling and garbage as instruments - first he uses them as drums.

Samuel finds some paddles/bats that make a sound when clapped together.

Ericson uses the paddles/bats as an instrument. This might seem loud. If it is too loud you can cover your ears or wear sound dampening headphones.

As Samuel collects paper for recycling, Ericson finds a glass and a small metal rod. Ericson uses these to make a tune. He whistles as he plays them. This can sound high pitched. This might seem loud or uncomfortable for your ears. If it is too loud or uncomfortable you can cover your ears or wear sound dampening headphones.

Samuel finds a radio. When he does music will play. It won't be very loud. You can dance in your seat if you want to.

Samuel empties most of the garbage bags onto the stage. It looks very messy, but it is supposed to.

Samuel finds an envelope with a ball in it. He throws the ball to Ericson - where did it go?

Samuel fits the ball inside a plastic water bottle. Ericson uses this as a shaker to make music with.

When Samuel begins to dance with the broom, Ericson will play music and sound effects. This might seem loud. If it is too loud you can cover your ears or wear sound dampening headphones.

Ericson uses a saxophone to make sounds when Samuel thinks he has found Axel.

Ericson has chocolate. Samuel would like some.

After Samuel licks the chocolate wrapper the stage goes darker and a little green. A spotlight appears on Samuel. This only last a few minutes. The stage will get lighter again.

Samuel performs some more magic.

While Samuel performs magic music is playing. What does the music remind you of?

Ericson plays some magical sounding music that gets quite loud when Samuel finds the magical pole. If it is too loud you can cover your ears or wear sound dampening headphones.

The magical pole chases Samuel. He seems afraid. He is not really. He is acting.

When Samuel wears the scuba flippers music plays and it can sound quite loud. If it is too loud you can cover your ears or wear sound dampening headphones.

Samuel finds Axel.

Axel is a puppet. Axel is not a real rat, even though he moves like he is.

After Axel is found, Samuel and Ericson go back to sorting the garbage and recycling.

Samuel juggles mops.

As Samuel juggles the mops, Ericson plays the saxophone. The music is fast and can sound frantic. It won't last long.

When Samuel finishes juggling mops, and Ericson finishes playing the saxophone, the show is over.

# Access Points for the Show

The Junior Festival is proud to expand access points for Spoiiiiiiiiing!

Below are some of the things we are able to offer

Chill Out space - the Chill Out space will be located in the Marilyn Brewer Community Space - right next door to the Brigantine Room.

Expanded seating areas for Mobility Device users and their families/group. There are two accessible washrooms on the main floor of the building.

Relaxed Guide - a Relaxed Guide has been created to help with the process of attending the show. The guide provides a story to help with attending the theatre, information on the show, photos of the actors, quick tips for planners (things for parents and caregivers to know), a map of Harbourfront Centre and more!

During the show - house lights will be left on at a low level, sound cues will be played slightly lower, audience members can move within the space and can leave and re-enter at any time, being authentically yourselves is encouraged so please feel free to fidget, stim, laugh, cry, whatever feels best for you and your group!



**Thank you for watching Spoiiiiiiiiing!**  
**We hope you enjoyed the play!**



## Credits

Spoiiiiiiiiing is presented by Kitt Johnson X-act.

Kitt Johnson X-act is one of the longest existing, most productive dance companies in Denmark. Founded in 1992, the company has evolved into a dynamic cultural enterprise, staging its own productions, producing and curating site-specific performance festivals, touring intensively at home and abroad, and offering physical classes, workshops, lectures and arts consultancy services. The company's repertoire represents a wide spectrum of solo performances, ensemble works, New Circus, site-specific projects and a children's performance.

Dancer and choreographer Kitt Johnson is the artistic director of X-act.

<https://www.kittjohnson.dk/english/>

## Cast:

Samuel

Samuel Gustavsson

Ericson

Sture Ericson

## Creative Team:

Artistic Director

Kitt Johnson

Lighting Design

Mogens Kjempff

## Accessibility:

Relaxed Guide & Consultation

Rachel Marks

## Photo Credits:

Harbourfront Centre facility images: Brian Medina

Spoiiiiiiiiing Production shots: Per Morten Abrahamsen

Headshots: Reimar Juul (Samuel) and Sami Sorasalmi Hiljaisuus (Sture)