

Dancing with the Universe Visual Story

What to expect when you come to experience *Dancing with the Universe*.



***Dancing with the Universe* will be presented as part of CoMotion Festival 2022 at Harbourfront Centre. This resource is helpful for anyone looking to understand what they can expect at *Dancing with the Universe*.**

For questions about access features offered at *Dancing with the Universe* please contact:

Katherine Hale
Accessibility Coordinator, CoMotion Festival
Email: khale@harbourfrontcentre.com
Phone: (416) 973-4960

We look forward to welcoming you to *Dancing with the Universe*!

Venue

Venue: Fleck Dance Theatre

The Fleck Dance Theatre is a large theatre on the third floor of The Queens Quay Terminal building located at 207 Queen's Quay West.

Please visit the CoMotion Festival Access Guide for photos and information about how to get to the Fleck Dance Theatre.

Dates and Times

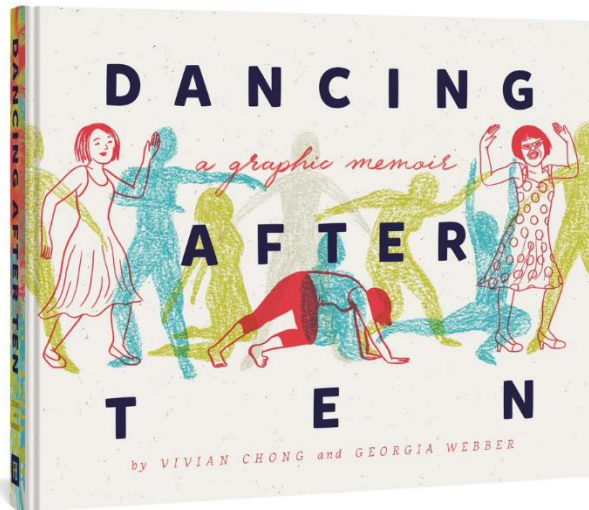
Saturday, April 23 at 8:00pm

Sunday, April 24 at 2:00pm

The performance is approximately 1 hour long.

Book Launch

There will be a book launch, signing and book sale for Vivian Chong's graphic memoir *Dancing after TEN* after the Saturday, April 23 performance. An audio-described version of *Dancing After TEN* is available through celalibrary.ca.



Dancing with the Universe Accessibility Information

The Fleck Dance Theatre is wheelchair-accessible. Volunteers and Harbourfront Centre staff will be available to help patrons get to the theatre to and from the building entrance 30 minutes before and after each show and can provide Sighted Guide to patrons who require “Curb-to-Seat” service.

Both shows will be presented with live Audio Description. Audio Description equipment is limited and should be reserved in advance to avoid disappointment.

Audio Description introductory notes will be sent in an email reminder before the performance and will also be given live 10 minutes before the performance. Please arrive 20 minutes before showtime to pick up your receiver and earpiece.

ASL Interpretation will be provided on Saturday, April 23 only.

A Relaxed Performance is available on Sunday, April 24 only. For the Relaxed Performance the theatre lights will stay slightly up, and audience members are welcome to come and go as needed. Sounds from the audience are welcome and expected.

To purchase a wheelchair-accessible seat, reserve Audio Description equipment, or request Sighted Guide “Curb to Seat” service, please contact the Box Office by email at tickets@harbourfrontcentre.com or call (416) 973-4000 and choose Option 1.

Before the Show

Once you get to the third floor of the Queen's Quay Terminal building using either the glass elevators or the escalator and stairs, you will see the Box Office windows and the entrance to the theatre lobby.

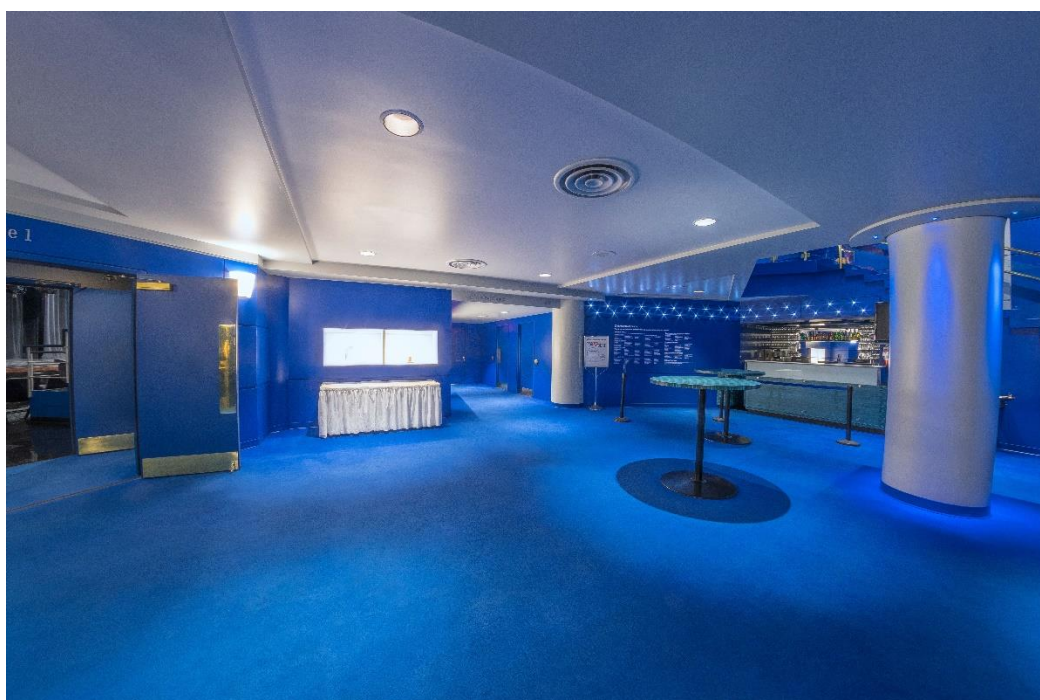
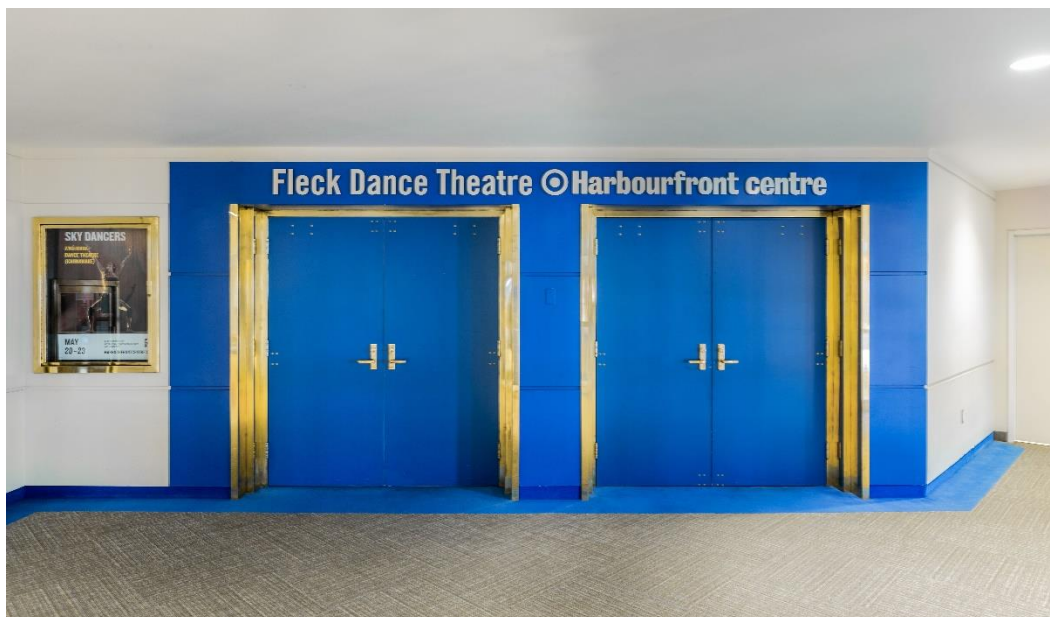
If you are visiting Fleck Dance Theatre at Harbourfront Centre for *Dancing with the Universe*, you will need a ticket for the event. If you bought tickets at home, you might have printed them out or you may have a digital copy on your phone.

Paper stock tickets are available on an as-needed basis, so you may also have a paper ticket that you pick up at the Box Office. The paper tickets are lime green with black writing and a black Harbourfront Center logo.



You can also pick up audio description or hearing assist equipment at the Box Office.

Before the show starts, there might be people waiting for the theatre to open and people may be loud with their talking. The carpets and walls in the Fleck Dance Theatre lobby are all the colour blue.



If you need to leave during the show for any reason, you are welcome to come back to the lobby and ask the Harbourfront Centre staff or volunteers for help if you need it. You may still hear some of the sounds from the show while you are in the lobby, but it should be quieter than inside the theatre.

When you enter the theatre, you will show your ticket to an usher. The usher can help you find your seat if you would like assistance. Each seat will have a unique seat number and the ends of each row have the letter of the row indicated.

The Theatre

The Fleck Dance Theatre will seat a maximum of 428 people for *Dancing with the Universe*. The seats and carpet inside the theatre are also blue.



The doors to the theatre will be opened 30 minutes before the show is set to start.

Audio Description Introductory Notes will be given 10 minutes before the performance for audience members who have picked up their audio description equipment.

People you Might See

The Artists: Vivian Chong and REASON d'être Dance Productions artists.

Visitor Service Representative or Ticket Seller: This person will be at the Box Office and will help you pick up your tickets or help you buy tickets for the show. This person will also help you pick up your Audio Description receiver and earpiece if you will be using the service.

House Manager or Supervisor: This person will be moving around the space to answer questions and make sure you get into the theatre and experience the show.

Usher: This person will check your ticket before you enter the theatre space. This is a good person to ask if you have questions or would like help finding your seat.

House Technicians: These people will run the lights and sound for the show and they sit in the "booth" which is a small room at the back of the theatre.

Volunteers: Harbourfront Centre volunteers will be available to answer questions and provide assistance if needed and will be wearing t-shirts that identify them as volunteers.

Operations Staff (Custodians): These people will make sure that the venue is kept clean and tidy.

Security: These people are there to make sure things are safe.

ASL Interpreters: The show on Saturday April 23, 2022, will be presented with ASL Interpretation and so you will see an ASL Interpreter on stage.

When the Show Begins

You will know the show is starting when the theatre lights start to dim – this is supposed to happen. People in the audience will stop talking and it may be very quiet.

During the Relaxed Performance on Sunday April 24, 2022, the theatre lights will stay slightly on so that it is not as dark.

During the Show

This section contains information about what to expect during the performance. If you would prefer not to know what happens, you may skip this section.

Dancing with the Universe is a dance theatre production co-directed by Vivian Chong and choreographer Kathleen Rea with dramaturge Tristan Whiston. It tells Chong's life story of losing her sight due to a reaction to Ibuprofen and her journey to re-discover herself as an artist and athlete. Chong performs in the production alongside an ensemble cast of six dancers and cellist Cheryl Ockrant. *Dancing with the Universe* is a multidisciplinary journey of human emotions that explores loss, grief and resilience with humour and unflinching honesty.



To learn more about Vivian Chong and REASON d'être Dance productions please visit the [Dancing with the Universe](#) event page.

Content Warning – Note from the Artists

Dancing with the Universe is recommended for ages 14 and up. Chong's story involves a depiction of a medical emergency, loss and the stages of grieving through dance and animated drawings.

Two of the videos featured involve animation that moves quickly and may feel disorienting for some. We recommend if this occurs to focus on the dance occurring on stage rather than the video images.

Two punk rock songs from Vivian's album *100%Wool* are featured, and attendees may experience these as chaotic. The vacation scene uses a song from *100%Wool*, has fast-moving video images and the dancers move quickly. This scene may be disorienting for some patrons. It may be helpful to have a plan that involves focusing inward to give yourself a break from the experience, or having a hand-stim ready in your pocket to help ground yourself.



There are three instances in *Dancing with the Universe* when dancers depict barking, angry dogs. This is to show Vivian Chong's fear of dogs that she had to overcome to get her service dog, Catcher.





Sunday, April 24: Relaxed Performance

The show on Sunday, April 24 is a Relaxed Performance. If you need to take a break during the show, you can move around the theatre or go into the lobby where it will be quieter. You may still hear some of the sounds from the show while you are in the lobby, but it should be quieter than inside the theatre space. Sounds from the audience (such as “stim” sounds) are welcome and expected during the show.

If you need a place to take a break before or after the show there is a [Chill Out Space](#) available in the Harbourfront Centre Main Building at 235 Queen’s Quay West. More details are available in the CoMotion Festival Access Guide.

When the Show Ends

At the end of the show the lights will go back on. People may clap their hands or make other sounds to show that they enjoyed the show. You may join in if you like, but you don't have to.

Sometimes people make loud sounds if they really enjoyed the show (like loud whistling). If you find this overwhelming, it may be helpful to prepare a plan for this moment such as plugging your ears when the clapping starts.

We want to hear from you!

If you have questions about the information in this visual story, please contact:

Accessibility Coordinator: Katherine Hale

Email: khale@harbourfrontcentre.com

Phone: (416) 973-4960