
Festival 2022 Access Guide

Curated by Alex Bulmer

April 20 – May 1, 2022

CoMotion

A New International Deaf and Disability Arts Festival.

Harbourfront Centre, Toronto

Table of Contents

Introduction:

What is CoMotion Festival?

Getting to Harbourfront Centre

Venues:

What does Harbourfront Centre look like?

Access Features:

How will this festival be accessible to me?

Who can I contact for assistance?

Acknowledgements

We want to hear from you!

For questions about access features offered throughout the festival please contact:

Katherine Hale
Accessibility Coordinator,
CoMotion Festival 2022

Email: [send mail link](#)
Phone: (416) 973-4960

For assistance with booking tickets, purchasing an accessible seat, or reserving other access features (audio description equipment, hearing assist equipment, etc.), please get in touch with the Box Office at:

Email: tickets@harbourfrontcentre.com
Phone: (416) 973-4000 – Select Option 1

Introduction

This Access Guide is for people coming to the CoMotion Festival between April 20 – May 1, 2022. In this guide, you will find information about where the festival events will be held and other things you might want to know before coming to an event.

This guide is designed to be used with the CoMotion Festival website, which includes the program details for each event, dates, times and booking information. For programming details, please visit harbourfrontcentre.com/series/comotion/.

This is a printable file; please feel free to print if you require a print version for access. Limited printed copies will also be available on-site at the Information Desk in the Main Building lobby at:

235 Queens Quay West, Toronto.

We hope you have a wonderful experience!

Accessibility Statement

Through CoMotion Festival, our inaugural International Deaf and Disability Arts Festival, we deepen the commitment to inclusion and accessibility for all artists, staff, volunteers and visitors to our 10-acre waterfront site. Inclusion, diversity, equity and accessibility (IDEA) are foundational values in all that is on offer at our campus. For us, to be inclusive and accessible is to ensure everyone is imagined in the presentation of and engagement in cultural offerings. We will continue to listen and learn how we can better create a place of belonging and serve all of our communities needs.

We invite you all to join us on this journey.

Curatorial by Alex Bulmer

Disability is political. Disability is community. Disability is identity. Disability is an experience of living in a world with a “one size fits one” design.

An international artistic and cultural movement is growing, and Deaf and disabled artists shout “We exist!”

Through art shaped and elevated by the lived experience of disability, where minds, bodies, senses and speech patterns innovate aesthetics, CoMotion Festival celebrates new ideas and expressions by international Deaf and disabled artists.

I curated CoMotion Festival from riches across visual art, music, performance, digital art, workshops and panel discussions to reflect the depth and diversity of this vibrant global community.

CoMotion Festival is true to its title: the festival values collective motion, interdependence and the disruption of expectations.

What is CoMotion Festival?

CoMotion Festival is a new international arts festival that will celebrate Deaf and disability culture and art over a period of twelve days at Harbourfront Centre.

- Visual Arts
- Dance
- Talks
- Digital Events
- Theatre
- Workshops
- Music

Getting to CoMotion Festival

Harbourfront Centre's Main Building is located at 235 Queens Quay West, on the south side of Queens Quay West, where Lower Simcoe Street ends.

The Harbourfront Centre Theatre is at 231 Queens Quay West.

The Fleck Dance Theatre is located on the third floor of the Queens Quay Terminal building located at 207 Queens Quay West.



This is an image of the main entrance on the east side of the Harbourfront Centre's Main Building and it is what you will see from the street.

Public Transit

The closest accessible subway station is Union Station. If you are walking from Union Station, walk south down York Street from Union Station. Turn right on Queens Quay West, walk west for about two minutes, and Harbourfront Centre will be on your left at 235 Queens Quay West.

Streetcar

Union Station is the closest accessible TTC station, and Harbourfront Centre is the name of the nearest streetcar stop. From Union Station, you can take either the 509 Harbourfront or 510 Spadina streetcar. The Harbourfront Centre stop is two stops west of Union Station.

TTC Accessible Trip Planner: www.ttc.ca/trip-planner

Parking

Harbourfront Centre Parking Services can be contacted at (647) 494-4227 or monthlyparking@harbourfrontcentre.com.

Lot P2: York Underground

The closest parking facility to all venues is underground, below Ontario Square, at 235 Queens Quay West. There are ten accessible parking spots available in this parking lot on multiple levels on the east side of the lot. All parking spaces are open on a first-come, first-served basis.

There is elevator access to each floor. After exiting the elevator on the Main level, you will be inside the parking pavilion. The parking itself is indoors; however, you will have to exit the parking pavilion and go outdoors to access the venues at Harbourfront Centre. There is no direct indoor access.

Parking (continued)

Lot P3: Rees Street

Above-ground parking is available one block west of the main building at Rees Street and Queens Quay West. There are five accessible parking spots available in the Southeast corner of this lot. All parking spaces are open on a first-come, first-served basis.

P2 York Underground



This is an image of the entrance to the parking garage at 235 Queens Quay West.

P3 Rees Street



This is an image of the sign and booth at the entrance of the Rees Street parking lot.

Venues: What does Harbourfront Centre look like?

There is a wheelchair-accessible entrance at the northeast corner of the Main Building, which you can see from the street. There is a set of stairs (3 steps), and there is also a ramp with railings on both sides. The entry doors are automatic.

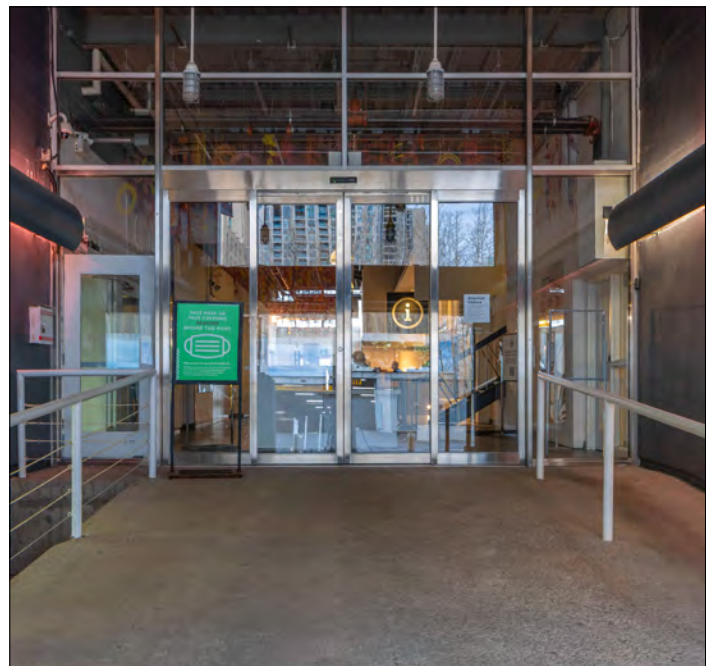
Harbourfront Centre Volunteers will be at the ramp 30 minutes before, during and 30 minutes after events in the Main Building. If you need assistance getting up or down the ramp at other times when the building is open, Harbourfront Centre Security can assist. You can contact them at (416) 973-4885.

Main Building
(also sometimes referred to
as the Artport Building)

The Main Building at
Harbourfront Centre is located
at 235 Queens Quay West.



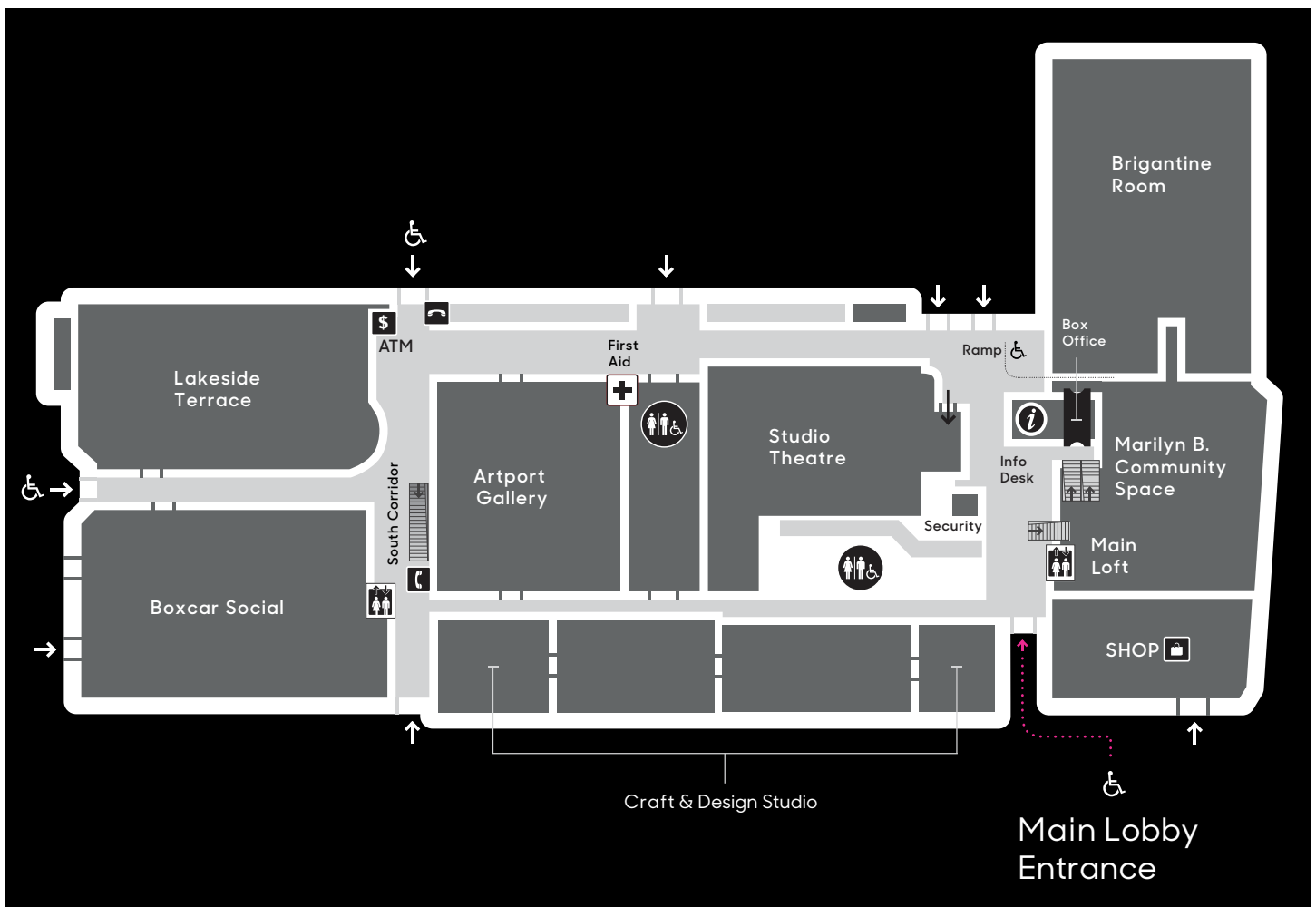
This is an image of the main entrance stairs and ramp.



This is an image of the main entrance ramp and automatic doors.

Venues: What does Harbourfront Centre look like? (continued)

Harbourfront Centre Main Building



This is a site map of the Harbourfront Centre Main Building.

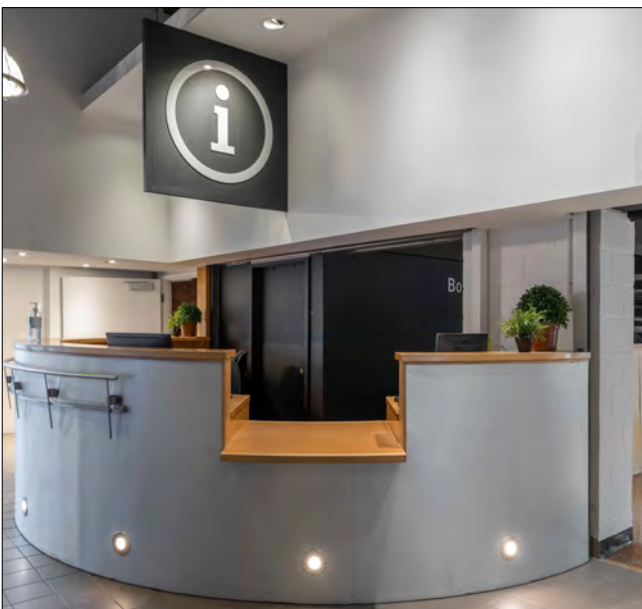
Venues: What does Harbourfront Centre look like? (continued)

When you go through the main entrance doors, you will be inside the lobby. The lobby may be busy with other visitors to Harbourfront Centre, especially if an event is beginning or ending.

From the entrance, there is an information desk straight ahead on the right side of the lobby, marked by a black sign with a large 'i' in white writing above the desk. Most of the curved desk is at standing height, with one section lowered for wheelchair or seated access.

At the information desk, a staff person will be there to give directions or answer any questions you have about Harbourfront Centre or CoMotion Festival.

In the lobby, there is also a Security Desk. Once you have entered the lobby from the main doors, the security desk is located straight ahead on the left side of the lobby area. This is also a great place to ask any questions you may have.



This is an image of the information desk in the main lobby.



This is an image of the security desk in the main lobby.

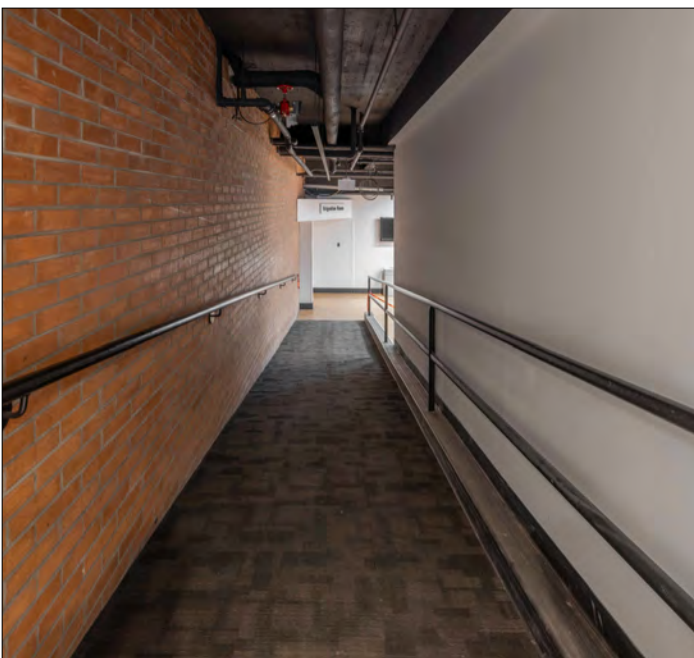
Marilyn Brewer Community Space

The Marilyn Brewer Community Space is inside the Main Building. The space will be set up differently depending on the event taking place. There are two ways to get to the area from the lobby.

Ramp Access:

When facing the information desk, there is a ramp that leads to the Marilyn Brewer Community Space and the Brigantine Room on the left side. The ramp has handrails on both sides, and the width can accommodate one wheelchair at a time.

This ramp is 66.7" wide and has a slope of 1:6.8. There is a very small landing area at the bottom of the ramp, intersecting with the entrance to the Brigantine Room. Wheelchair users may find this ramp challenging to navigate independently, especially going up. Volunteers will be there during events to assist with going up and down the ramp and controlling traffic in this area to ensure safety. When there are no events taking place, you can request assistance at the Security Desk.

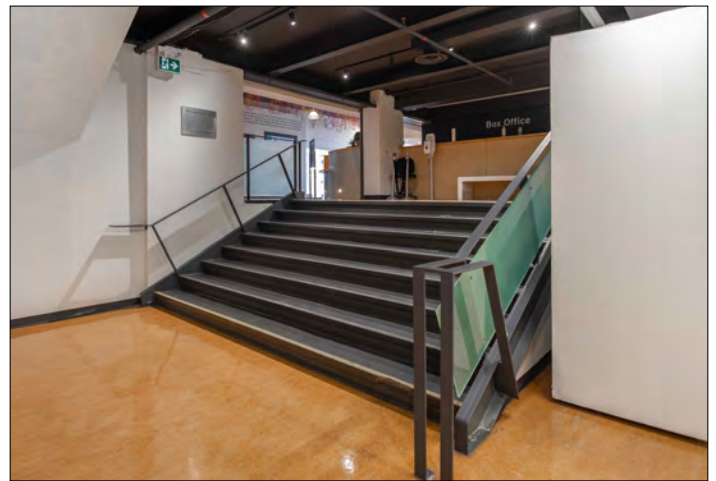


These are two images of the ramp from the lobby to the Marilyn Brewer Community Space.

Marilyn Brewer Community Space (continued)

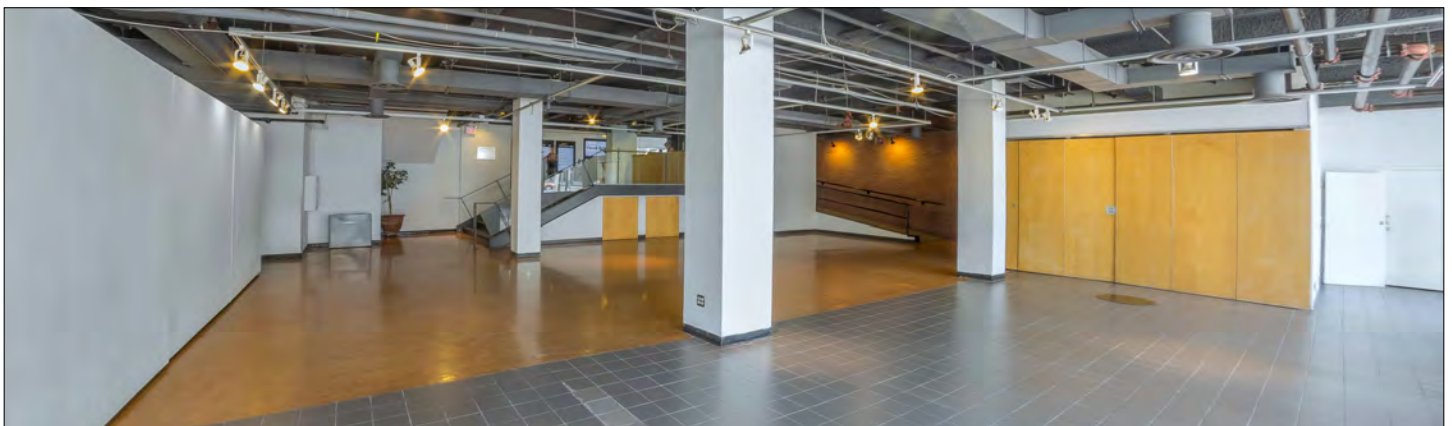
Stairs:

Beside the information desk on the right, there are eight (8) steps down to the Marilyn Brewer Community Space. There are handrails on both sides of the wide staircase.



These are two images of the stairs from the lobby to the Marilyn Brewer Community Space, one from the top of the stairs and one from the bottom.

The Marilyn Brewer Community Space is a large open room with four pillars. When at the bottom of the stairs or ramp, the south wall straight ahead has windows covered from the outside, so the light is filtered. This is a flexible space that will be set up differently throughout CoMotion Festival.



This is an image of the Marilyn Brewer Community Space.

Brigantine Room

The Brigantine Room is also inside the Main Building and can be accessed from the Marilyn Brewer Community Space. If you use the ramp to get to the Marilyn Brewer Community Space, the entrance to the Brigantine Room will be on the left.



This is an image of the entrance to the Brigantine Room from the Marilyn Brewer Community Space.

The Brigantine Room is also an ample open space. When you enter the room, there is a stage on the right side. This flexible space can be set up in various ways, and it may look different depending on the event.



This is an image of the inside of the Brigantine Room.

Studio Theatre

The Studio Theatre is located inside the Main Building and can be accessed from the main lobby. If you are using stairs to enter the theatre, from the main entrance continue straight to the end of the lobby, then turn left to face the west corridor. The entrance to the Studio Theatre will be on your left.



This is an image of the entrance to the Studio Theatre.

Enter the double doors and you will find yourself in a small landing area with red walls. Turn either left or right to go up a set of seven stairs and you will be inside the theatre space.



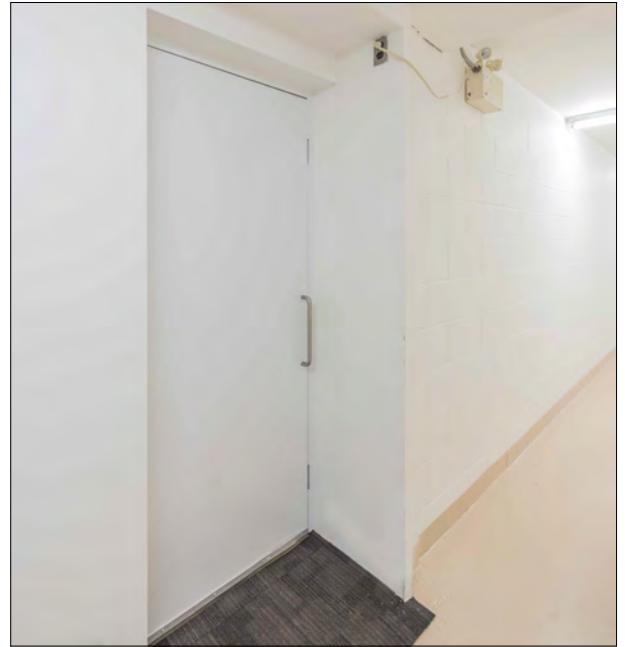
This is an image of the Studio Theatre's seats and stage.

Studio Theatre (continued)

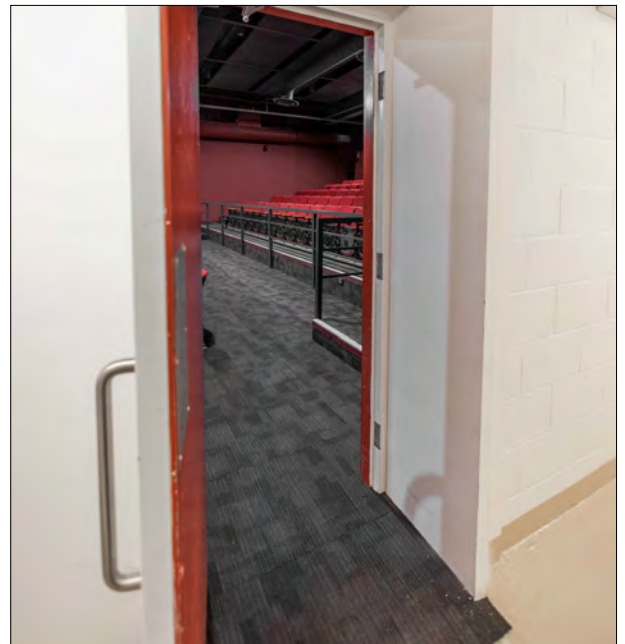
The Studio Theatre has both standard seating and wheelchair accessible seating. If you require a wheelchair accessible seat, there is an alternate entrance to the Studio Theatre just to the left of the Security Desk in the main building lobby. This door leads to a hallway. Continue down this hallway, and there is another door that can be used to enter the theatre and the row of wheelchair accessible seats. This doorway has a very small incline when passing through it.

Please Note:

The alternate entrance doors do not have automatic door openers. Harbourfront Centre volunteers and ushers will be available to assist patrons entering the theatre using these doorways.



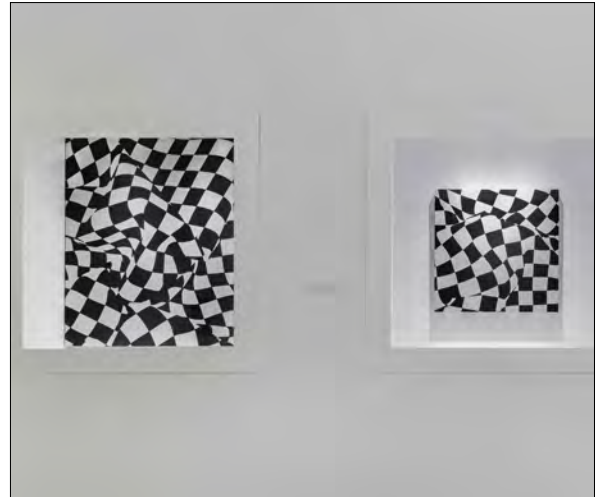
This is an image of the alternate entrance to the Studio Theatre from the main lobby.



This is an image of the Studio Theatre's seats and stage.

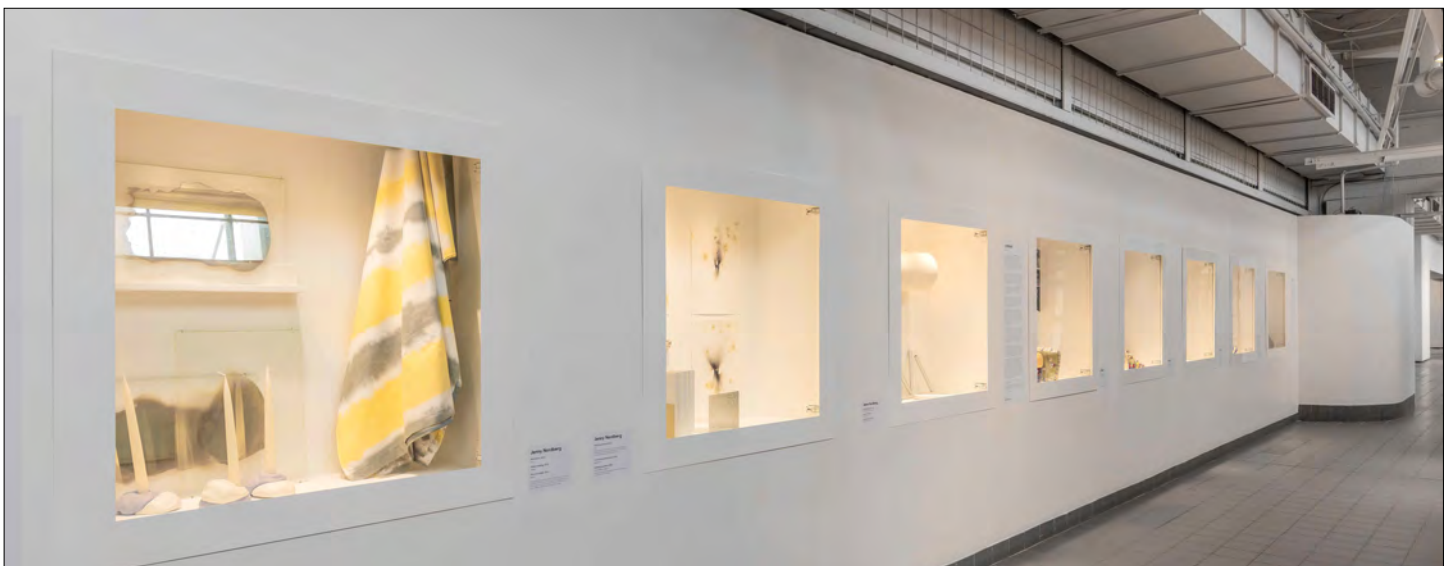
West Vitrines

A vitrine is a glass display case. There are eight vitrines in the west corridor of the Main building that will be used for CoMotion Festival. Each vitrine is approximately 36" tall, 36" wide, and 15" deep and enclosed behind a glass door. The bottoms of the vitrines are 36" from the finished floor of the corridor.



This is an image of one vitrine, or display case.

From the main entrance, continue straight to the end of the lobby, then turn left to enter the west corridor. The vitrines are on the left side of this corridor.



This is an image of the vitrines in the west corridor.

West Bays

The west bays are in the same corridor as the west vitrines, on the opposite side of the corridor. Each bay has large glass garage doors on the inside and the outside, so if it is a sunny day, the corridor will be quite bright.



This is an image of one of the bays.

Washrooms on the Main Floor of the Main Building

There are two single-stall gender-inclusive accessible washrooms in the Main Building with the same access features. One is in the east corridor (also known as the Craft Corridor) and the other in the west.

There are also two gender-inclusive restrooms with several stalls in the east corridor, and in the west corridor are two gender-specific restrooms with several stalls (one marked W for Women's and one marked M for Men's).

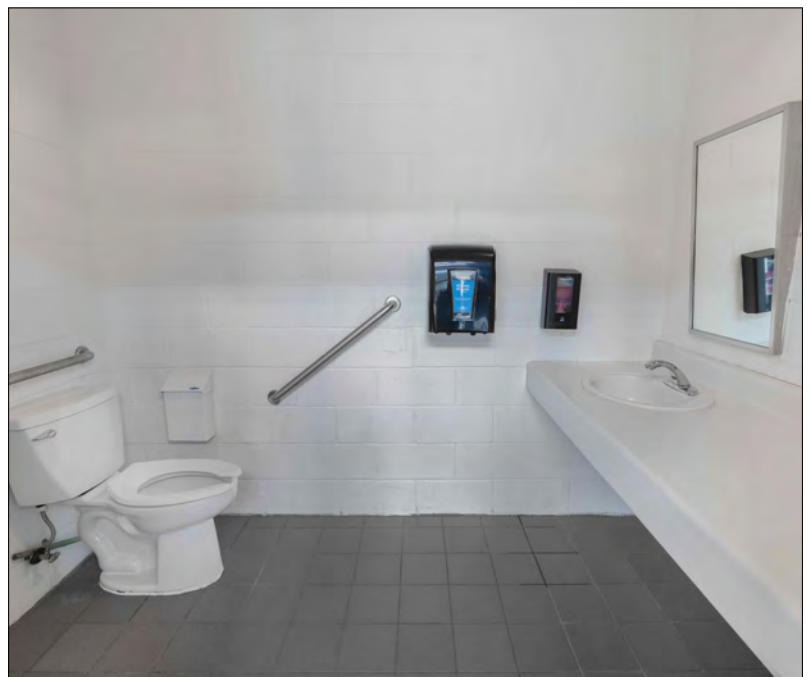
Washrooms on the Main Floor of the Main Building (continued)



This is an image of the doors to the three restrooms in the west corridor. The single-stall accessible washroom is in the middle. To the right of the accessible washroom, there is a water fountain with a water bottle filling station.

There is an automatic door opener on the wall just to the left of the door handle. The doorway width is 33.5”.

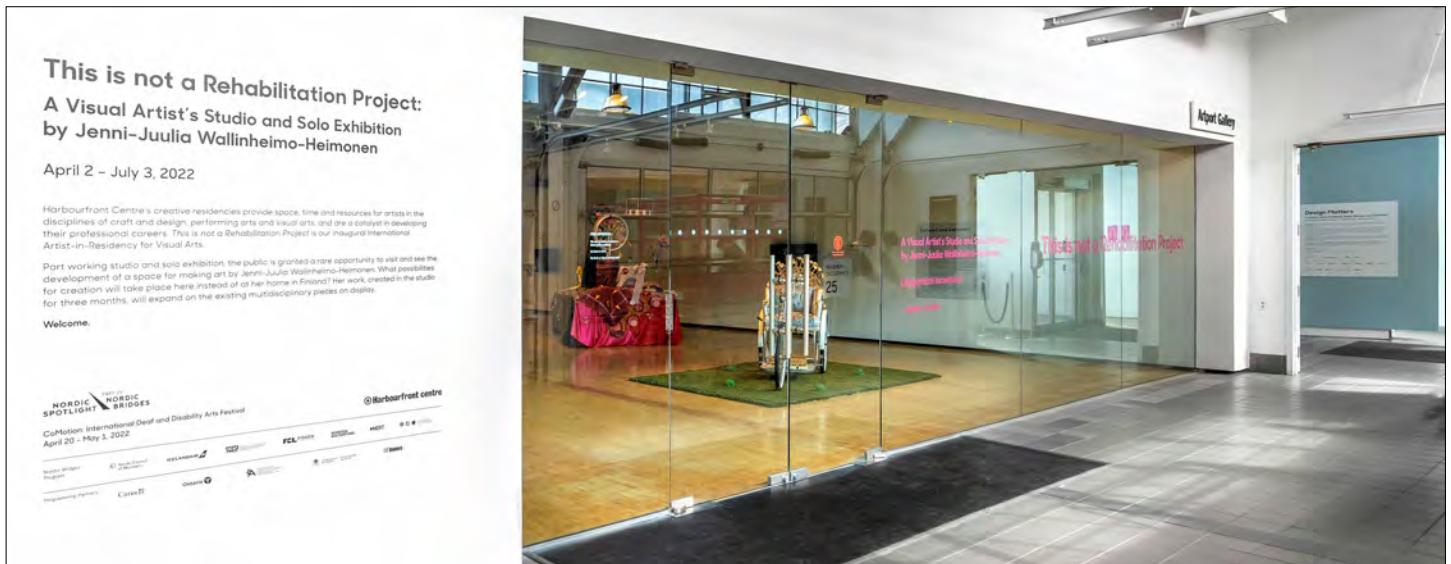
Inside the accessible restroom, there is a grab bar beside the toilet on the left side, the counter and sink are lowered, and both the tap and soap dispenser are motion-activated.



This is an image of inside the accessible restroom.

Artport Gallery

Continue down the west corridor, past the vitrines, bays, restrooms and the Artport Gallery will be on your left. The gallery spans between the west corridor and the Craft Corridor. The doors to the Artport Gallery are not power-automated but will be kept open during gallery hours.



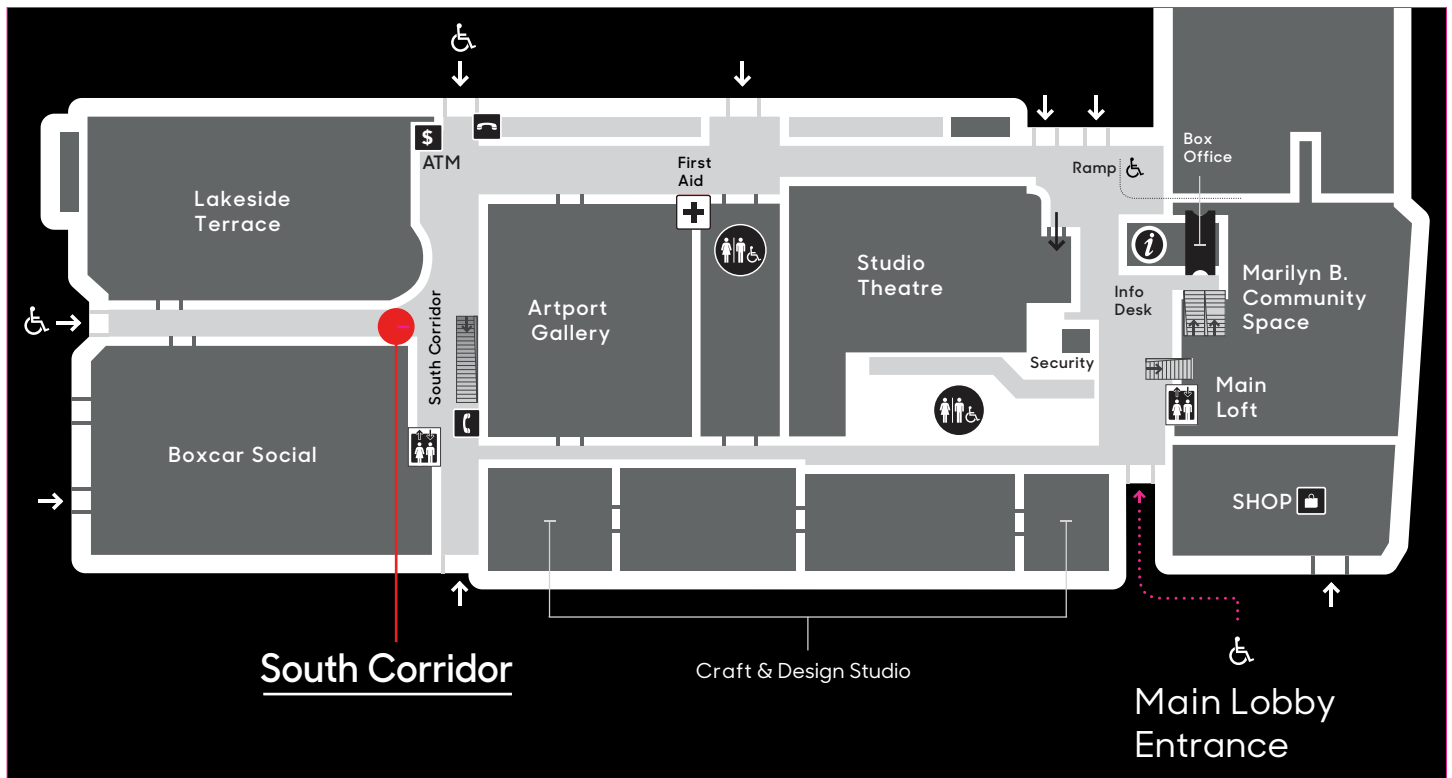
This is an image of the entrance to the Artport Gallery with the doors closed.



This is an image of inside the Artport Gallery.

South Corridor

You can get to the south corridor from the lobby by going through the east or the west corridor. If you travel down the west corridor, past the vitrines, bays, restrooms and Artport Gallery, you will turn left into the south corridor.



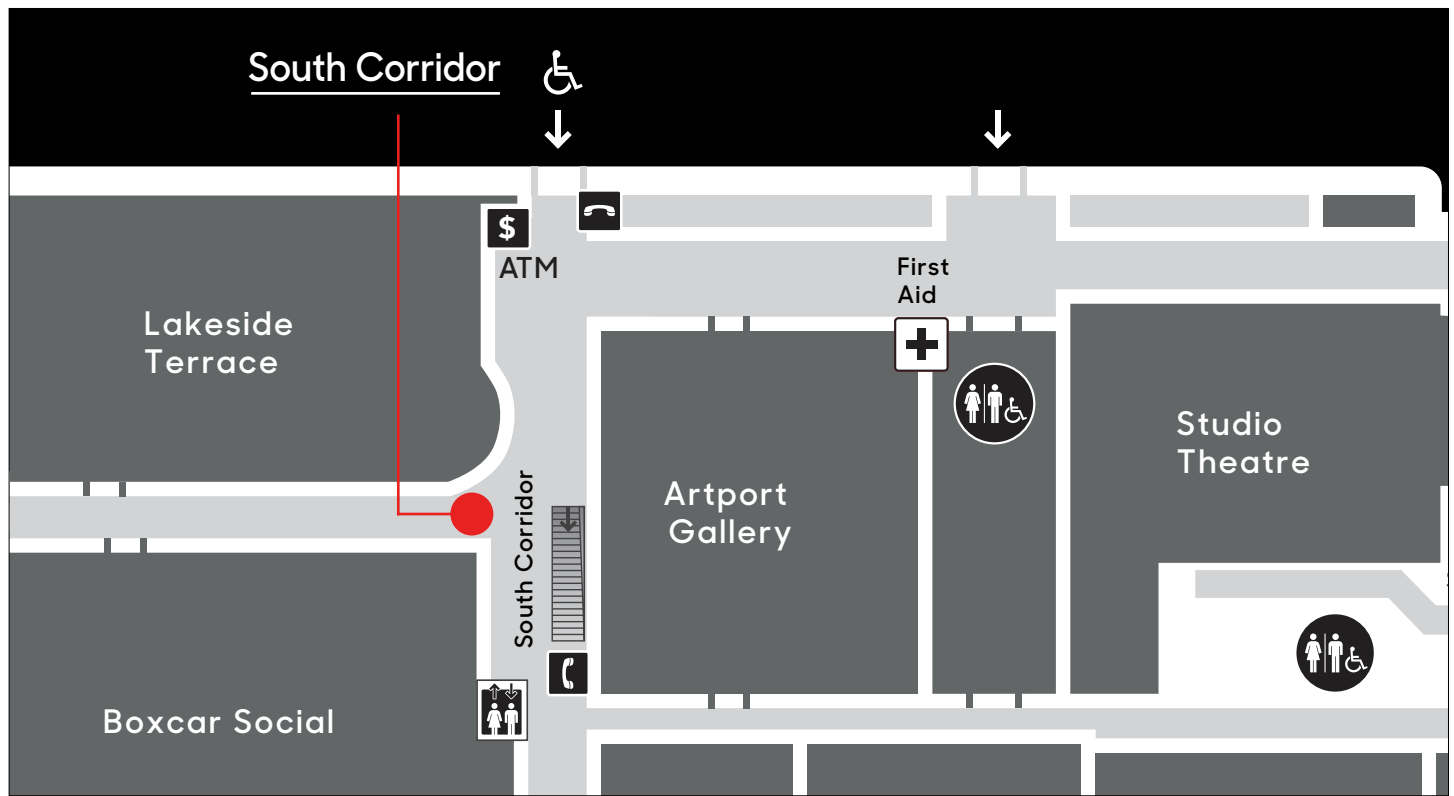
This is a site map of the Harbourfront Centre Main Building, with the South Corridor location circled in red.



This is an image of the south corridor.

Lakeside Terrace

The Lakeside Terrace can be accessed from the south corridor by continuing south towards the harbour. A broad set of double doors will be open when the space is open for events.



This is a map showing the Location of the Lakeside Terrace in relation to the south corridor.



This is an image of inside the Lakeside Terrace space.

Main Building Chill Out Space

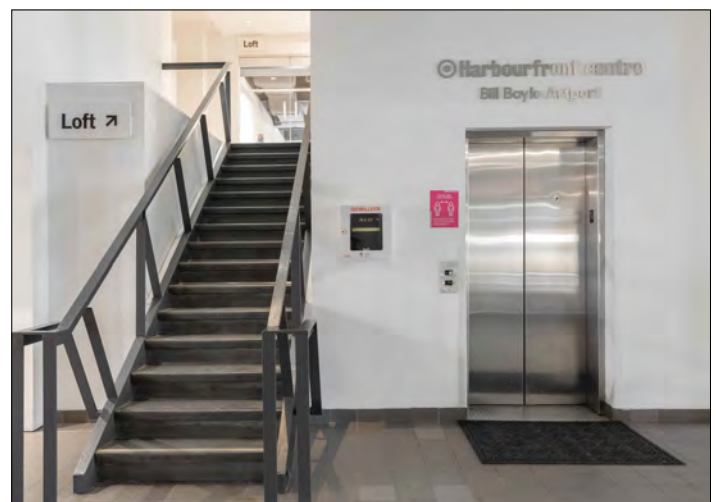
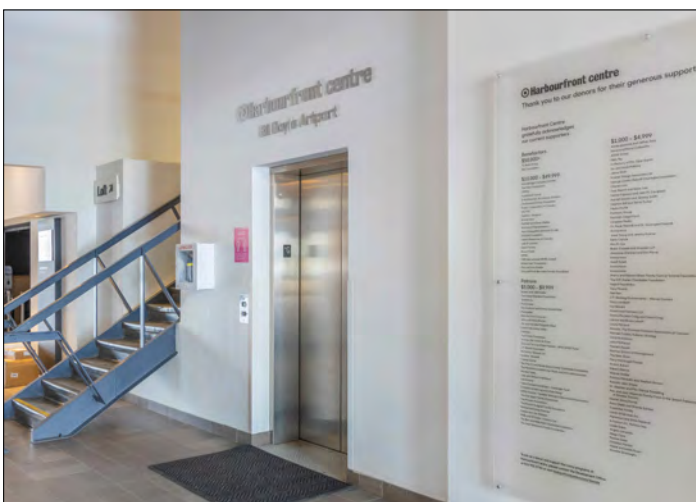
A Chill Out Space will be available during CoMotion Festival located in the Main Loft of the Main Building at 235 Queens Quay West. The Main Loft is on the second floor of the Main Building and can be accessed in two ways:

Elevator Access:

There is an elevator near the main entrance, on the right side when you have entered the lobby. The button to call the elevator is on the wall to the left of the elevator. Once inside the elevator, the buttons are on the right side when facing the doors. Select the 2nd floor, and the elevator will take you to the Main Loft – you will exit the elevator on the opposite side from where you entered.

Stairs:

To the left of the elevator there is a set of stairs with 15 steps that will also take you to the Main Loft.



These are two images of the elevator and stairs that can be used to get to the Main loft.

Main Building Chill Out Space (continued)

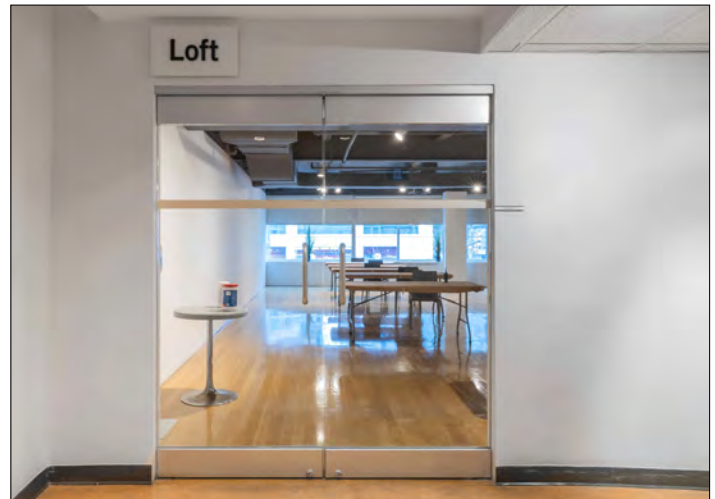
Once you exit the elevator or get to the top of the stairs, the entrance to the Main Loft is straight ahead.

Inside the Chill Out Space, you will find tables, chairs and couches, and a section with quiet games and activities. There may be soft music playing, which volunteers can turn on or off.

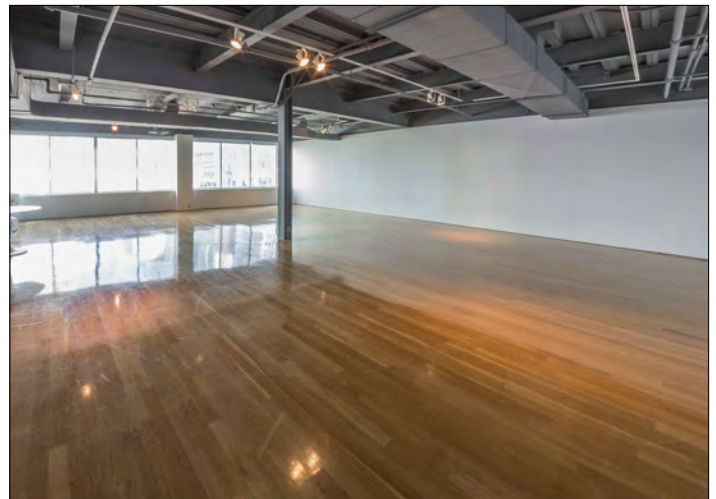
Hours

The Chill Out Space will be available during the CoMotion Festival:

- Wednesday, April 20: 6–9pm
- Thursday, April 21 and Friday, April 22: 12–6pm
- Saturday, April 23: 12–6pm
- Sunday, April 24: 11am–6pm
- Wednesday, April 27: 12–9pm
- Thursday, April 28: 12–6pm
- Friday, April 29: 12–9pm
- Saturday, April 30: 11am–9pm
- Sunday, May 1: 12–9pm



This is an image of the entrance to the Main Loft.



This is an image of inside the Main Loft.

Harbourfront Centre Theatre

The Harbourfront Centre Theatre is inside a separate red brick building across the laneway from the Main Building. The building address is 231 Queens Quay West. The Power Plant Contemporary Art Gallery is also inside this building.

To get to the Harbourfront Centre Theatre from the Main Building, travel south towards the harbour, and the building will be on your left – there is an entrance to the lobby here on the west side of the building with automatic doors.



This is an image of the west entrance of the building.

There is also an entrance on the east side of the building with automatic doors.



This is an image of the east entrance of the building.

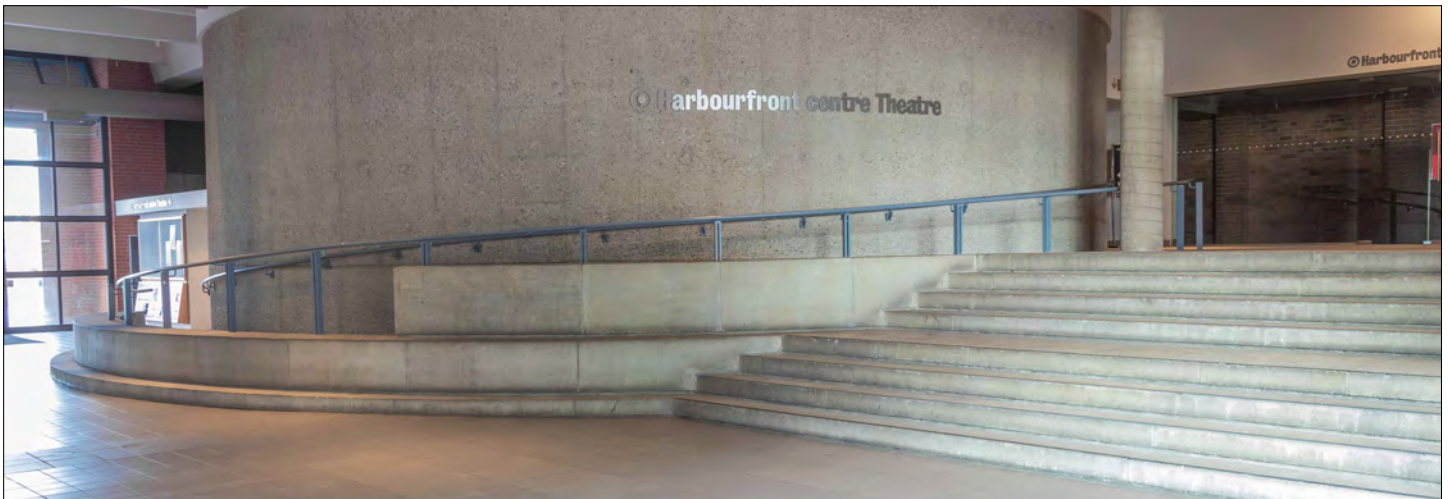
Harbourfront Centre Theatre (continued)

Ramp Access:

There is a long, curved ramp with railings on both sides. The ramp is 33.5” wide and can only fit one-way traffic for people using mobility devices. There will be volunteers at the top and bottom of the ramp traffic for safety and aid if needed

Stairs:

There is also a set of eight stairs leading up to the theatre’s doors.



This is an image of the ramp and stairs leading up to the Harbourfront Centre Theatre.

At the top of the ramp and stairs is another landing. On the right-hand side is the box office, on the left is a corridor leading to a set of restrooms and straight ahead are the doors to the theatre lobby.

Harbourfront Centre Theatre Restrooms

There are two gender-inclusive single-stall restrooms in the Harbourfront Centre Theatre building with the accessible sign on them and two other multi-stall restrooms marked Women's and Men's.

Please Note:

The doorways to both single stall restrooms are 28.5" wide.

1

If you enter the lobby from the west side of the building, there is a restroom on the left side.



This is an image of the door of the accessible restroom on the main floor of the building.

2

There are two grab bars inside this restroom, one to the right and one behind the toilet. The tap has standard independent hot and cold controls and is not automatic.



This is an image of inside the restroom on the main floor.

Restroom Access Note:

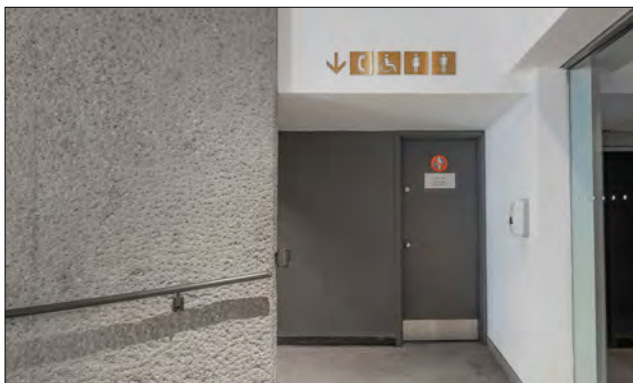
There is an automatic door opener about five feet to the right and just to the left of the bottom of the ramp. The doorway is 28.5" wide.

Harbourfront Centre Theatre Restrooms (continued)

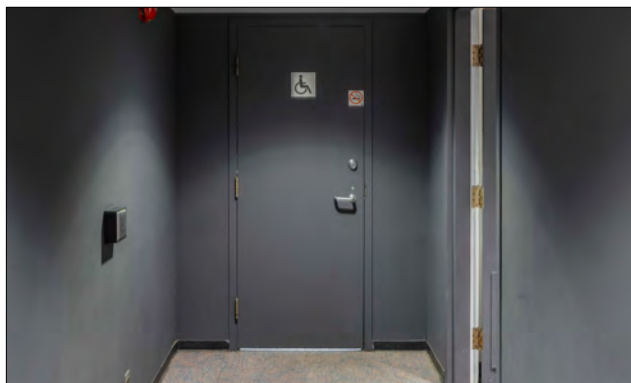
When you get to the top of the ramp or stairs, turn left. Proceed down this small hallway to find another set of restrooms. Women's is on the left, Men's on the right and a single stall gender-inclusive restroom straight ahead.

Access Note:

The automatic door opener to open the restroom door is on the wall on your left when facing the door.

1

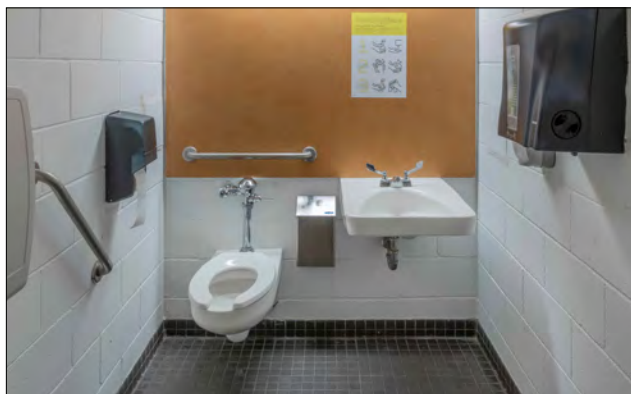
This is an image of the hallway leading to the washrooms in the Harbourfront Centre Theatre lobby.

2

This is an image of the door to the second single stall restroom in the Harbourfront Centre Theatre building.

3

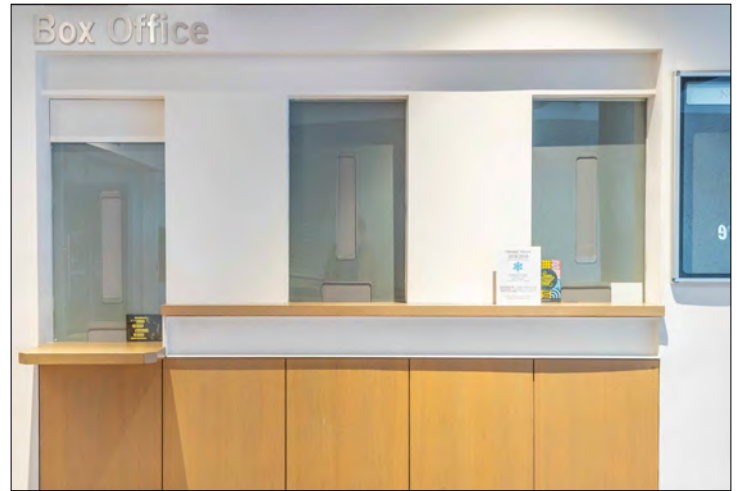
This upper lobby restroom has the same features as the lower lobby restroom.



This is an image of inside the upper lobby restroom.

Box Office

From this landing, you will pass through a set of glass doors, turn to the right, pass through another door and be inside the Harbourfront Centre Theatre Lobby. The entrance to the theatre space is in this lobby. The lobby may be busy with other visitors to Harbourfront Centre, especially if an event is beginning or ending. There will be staff and volunteers to assist with directions and to get into the theatre.



This is an image of the Box Office. The left area of the counter is lowered.

Please Note:

The balconies in the Harbourfront Centre Theatre are only accessible via stairs (no elevator access). If you are unable or would prefer not to use the stairs, please purchase a ticket on the main level or in the accessible seating section.



This is an image of inside the Harbourfront Centre Theatre.

Fleck Dance Theatre

The Fleck Dance Theatre is a large theatre on the third floor of The Queens Quay Terminal building. The building address is 207 Queens Quay West.

There are two main access points on the ground floor of the building.

The first access point is on the north side of the building, facing Queens Quay, and is the closest access point to the sidewalk and TTC streetcar stops. There is an elevated entranceway with ramps at the east and west ends and four stairs. The entrance doors are power automated.



This is an image of the north entrance to the Queens Quay terminal building.

After going through the entrance, a security desk is straight ahead and to the right (on the west side of the hallway). This is a great place to ask if you have questions about getting to the Fleck Dance Theatre.



This is an image of the security desk just inside the north entrance.

Fleck Dance Theatre (continued)

The other access point is at the southwest corner of the building and is close to the boardwalk and the Harbourfront Centre main campus.



This is an image of the southwest entrance to the Queens Quay terminal building.

There are four steps at the doors when facing the entrance, or a ramp at the west or left end of the entrance. Once you have entered the building, continue straight ahead until the hallway opens up – there will be restaurants and a food court area on your right.



This is an image of the food court area inside the Queens Quay terminal building, which you pass to get to the Fleck Dance Theatre.

Continue past this area, and slightly to the left, there is an elevator with glass walls that can be used to access the 3rd floor, where the Fleck Dance Theatre is. There are fountains in this lobby so that you will hear the sound of water.



This is an image of the glass elevators that can be used to get to the Fleck Dance Theatre on the 3rd floor.

Fleck Dance Theatre (continued)

Once you get to the third floor, exit the elevator, and the box office is in front of you, slightly to the left. The entrance to the theatre lobby is ahead of you and slightly to the right. There are two windows for the Box Office – the one on the left is lowered.



This is an image of the Fleck Dance Theatre Box Office.



This is an image of the Fleck Dance Theatre lobby.



This is an image of inside the Fleck Dance Theatre.

Fleck Dance Theatre Restrooms

There is an accessible gender-neutral restroom on the main level of the Queens Quay Terminal, west of the south elevator bank. This restroom has an automatic door opener, a large turning radius, grab bars and a personal alarm system.



This is an image of inside the accessible washroom at the Fleck Dance Theatre.

There is also gender-specific restrooms within the theatre that are partially accessible, including automatic door openers. When entering the Fleck Dance Theatre lobby travel straight inside the theatre. The Coat Check desk is on your left, and the gender-specific Women's and Men's multi-stall restrooms are on your right.

CoMotion Festival Access Features

Harbourfront Centre Venue Access Information

The venues at Harbourfront Centre for CoMotion Festival are wheelchair accessible, and wheelchair seating is available for performances and events.



Access Note:

We recognize that not every aspect of the building, including ramps and restrooms, will be accessible for every disabled person. We have attempted to provide the most transparent details about each element of access for each CoMotion Festival venue.

Accessible gender-inclusive restrooms are available in the locations explained above in the “Venues” section.

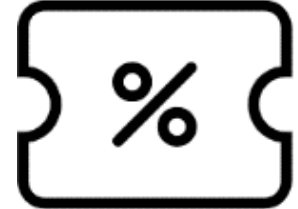


CoMotion Festival Access Features (continued)

Service animals are welcome in all venues and all areas of Harbourfront Centre open to the public.



Ticket Prices: Harbourfront Centre has introduced Pay What You Wish pricing. Ticket buyers are encouraged to select the ticket price they wish to pay for a performance, with a suggested ticket price as a guideline. Some events and exhibits during CoMotion Festival are free of charge.



Companion tickets are available for support persons, free of charge to all ticketed events. To book an accessible seat or companion ticket, please get in touch with the Box Office at:

tickets@harbourfrontcentre.com or call (416) 973-4000 and choose Option 1.

Performance and Event Access Features

Access icons and explanations for each event are listed on the CoMotion Festival website to help identify which events include the access features below.

Active Listeners:

Active listeners will be available after events that may contain triggering content to help navigate and hold space for complicated feelings that may come up.



Assistive Listening:

Headphone-based assistive hearing devices are available for performances upon request. To reserve an assistive hearing device, please get in touch with the Box Office at:

tickets@harbourfrontcentre.com

or call (416) 973-4000 and choose Option 1.



ASL Interpretation:

ASL Interpretation services will be provided by a team of interpreters throughout the festival, including Deaf Interpreters and ASL Interpreters.



Performance and Event Access Features (continued)

Audio Description:

Audio Description is the descriptive narration of key visual elements in performances, events and media. Audio Description offerings will include:

- Audio Descriptions of Visual Arts exhibits
- Audio Description Introductory Notes for performances
- Live Audio Description for select performances



Braille:

Braille books will be provided for Visual Arts exhibits and will include information about each exhibit.



Performance and Event Access Features (continued)

Captions:

Captions include information translated from sound to text and are a direct transcript of the language being used. Captions may be open (visible for everyone) or closed (allows the viewer to turn captions on and off).



Live Captions:

Live, real-time captions will be provided for certain events.



Chill Out Spaces:

A Chill Out Space will be made available throughout the CoMotion Festival, located in the Main Building, and is designed to reduce sensory stimulation and allow patrons to take a break from the main action of the festival.



Performance and Event Access Features (continued)

Relaxed Performance:

Relaxed Performances are designed to welcome audience members who may benefit from a less restrictive and more relaxed sensory environment. Relaxed Performances have a relaxed attitude to noise and movement, including leaving house lights on at a low level and allowing audience members to come and go as needed.



Visual Stories will be available for each Relaxed Performance. They will provide details about access features, content warnings and descriptions and other information that may help patrons prepare for the event.

Surtitles:

Surtitles are translated lyrics and dialogue projected above a stage or displayed on a screen.



Touchable:

Certain visual arts exhibits will have touchable elements.



Who can I contact for assistance?

If you have questions about access and services available during CoMotion Festival 2022, please contact Katherine Hale, Accessibility Coordinator, at: khale@harbourfrontcentre.com or (416) 973-4960.

How can I provide feedback about CoMotion Festival access?

Harbourfront Centre staff and volunteers will be available on-site during the festival to provide support and answer questions.

Assistance is also available at any of the Information or Security Desks listed above in the “Venues” section.

If you have feedback (including questions, comments and concerns) about accessibility throughout CoMotion Festival, feedback methods available include:

- In-person feedback during your event, performance or visit by requesting to speak to a Harbourfront Centre staff member
- Email: khale@harbourfrontcentre.com
- Phone: (416) 973-4960
- Mail: Harbourfront Centre,
235 Queens Quay West,
Toronto, Ontario
Canada M5J 2G8,
Attention: Visitor Services

Acknowledgements

Creative Users Projects

CoMotion Festival 2022 will be using the access icon package compiled by the Creative Users Project, a disability-led national arts service organization whose community program, weekly newsletter and online platform connect people to cultural knowledge, resources and accessible opportunities to help artists and arts leaders build stronger and more inclusive communities. Learn more about this organization by visiting www.CreativeUsers.net.

Access Guide Consultation and Review

Shay Erlich
BA CYC, MA CYC
CEO Shay Erlich Consulting
Co-Director The Cyborg Circus Project

CoMotion

A New International Deaf and Disability Arts Festival.